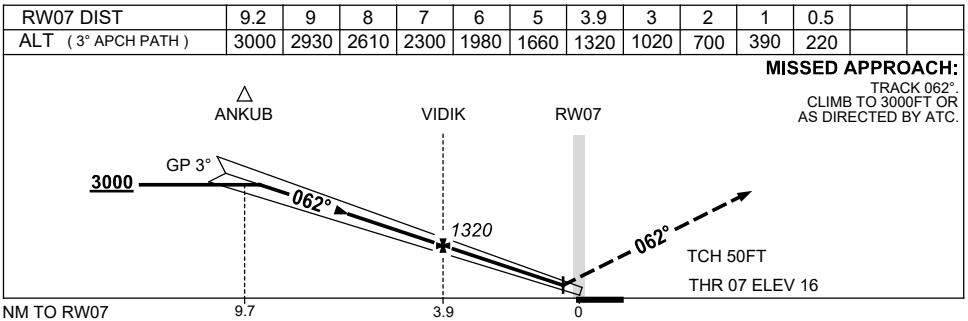
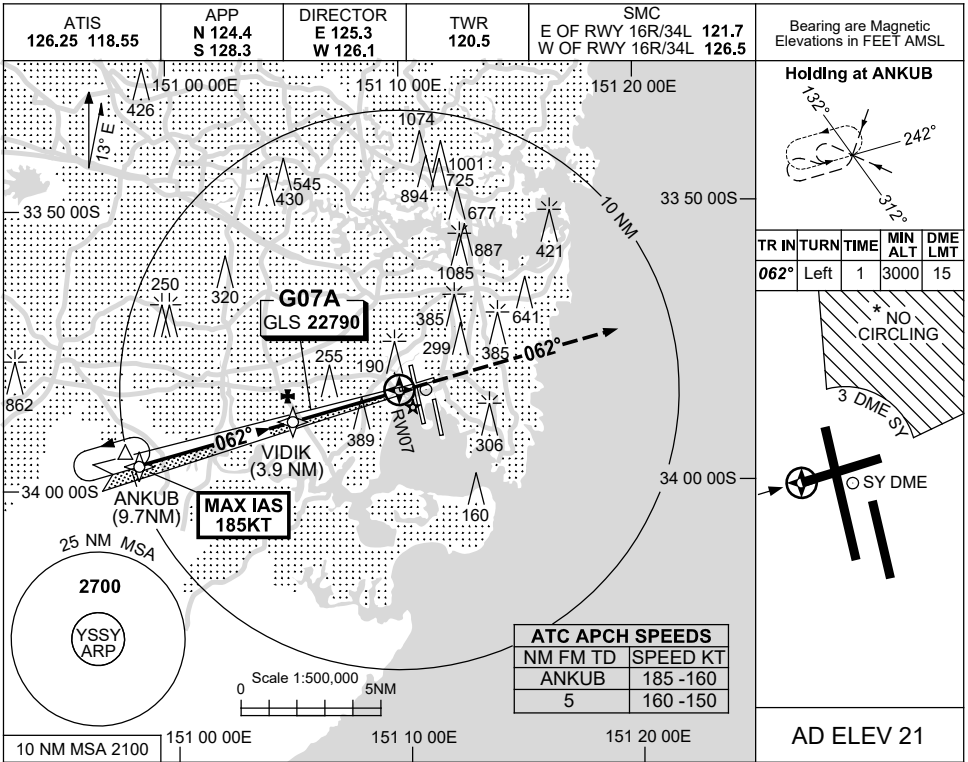


USE QNH **GLS RWY 07**
SYDNEY/KINGSFORD SMITH, NSW (YSSY)

30 NOV 2023



CATEGORY	A	B	C	D
S-I GLS	220 (204-1.5) 1500 RVR			
CIRCLING *	710 (689-2.4)	1000 (979-4.0)	1000 (979-5.0)	
ALTERNATE	(1189-4.4)	(1479-6.0)	(1479-7.0)	

- NOTES**
- MAX IAS : ANKUB : 185KT.
 - NO CIRCLING BEYOND 3 DME SY EAST OF RWY 16R & NORTH OF RWY 25.

Changes: MISSED APPROACH, NEW LOGO.

SSYGL01-177