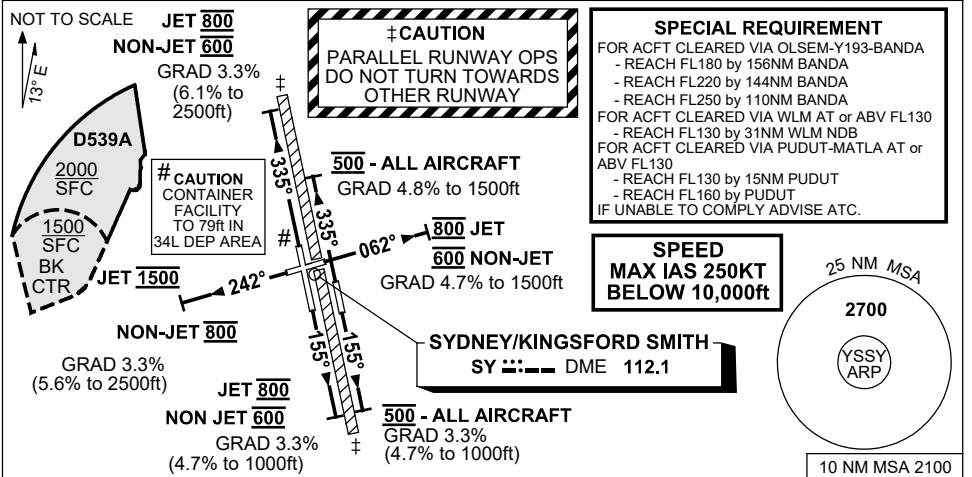


**STANDARD INSTRUMENT DEPARTURES (SID)
SYDNEY THREE DEPARTURE (RADAR)
SYDNEY/KINGSFORD SMITH, NSW (YSSY)**

30 NOV 2023

ATIS 118.55 126.25	ACD 133.8	SMC E OF RWY 16R/34L 121.7 W OF RWY 16R/34L 126.5	TWR RWYS 16R/34L,07/25 120.5 RWYS 16L/34R 124.7	DEP(N) N&E 123.0	DEP(S) S,W&NW 129.7
------------------------------	---------------------	---	---	----------------------------	-------------------------------



SYDNEY THREE DEPARTURE (RADAR)

- | | |
|--|---|
| <p>RWY 07
GRAD 4.7% to 1500ft, then 3.3%</p> <ul style="list-style-type: none"> Track 062° AT 600ft (800ft Jet ACFT) turn to assigned heading or track Expect radar vectors ACFT cleared via OLSEM, WLM or MATLA see SPECIAL REQUIREMENT above <p>RWY 16R
GRAD 3.3% (4.7% to 1000ft)</p> <ul style="list-style-type: none"> Track 155° AT 600ft (800ft Jet ACFT) turn to assigned heading or track Expect radar vectors ACFT cleared via OLSEM, WLM or MATLA see SPECIAL REQUIREMENT above <p>RWY 16L
GRAD 3.3% (4.7% to 1000ft)</p> <ul style="list-style-type: none"> Track 155° AT 500ft turn to assigned heading or track Expect radar vectors ACFT cleared via OLSEM, WLM or MATLA see SPECIAL REQUIREMENT above | <p>RWY 25
GRAD 3.3% (5.6% to 2500ft)</p> <ul style="list-style-type: none"> Track 242° AT 800ft (NOT BEFORE 1500ft Jet ACFT) turn to assigned heading or track Expect radar vectors ACFT cleared via OLSEM, WLM or MATLA see SPECIAL REQUIREMENT above <p>RWY 34R
GRAD 4.8% to 1500ft, then 3.3%</p> <ul style="list-style-type: none"> Track 335° AT 500ft turn to assigned heading or track Expect radar vectors ACFT cleared via OLSEM, WLM or MATLA see SPECIAL REQUIREMENT above <p>RWY 34L #
GRAD 3.3% (6.1% to 2500ft)</p> <ul style="list-style-type: none"> Track 335° AT 600ft (800ft Jet ACFT) turn to assigned heading or track (NO RIGHT TURN BLW 1500ft) Expect radar vectors ACFT cleared via OLSEM, WLM or MATLA see SPECIAL REQUIREMENT above |
|--|---|

COMMUNICATIONS FAILURE PROCEDURE

On recognition of communication failure.

- Squawk 7600
- Maintain last assigned vector for two minutes and, if necessary, climb to minimum safe altitude to maintain terrain clearance, then
- Proceed in accordance with the latest ATC route clearance acknowledged.

Changes: SPECIAL RQMNTS, NEW LOGO, Editorial. SSYDP12-177