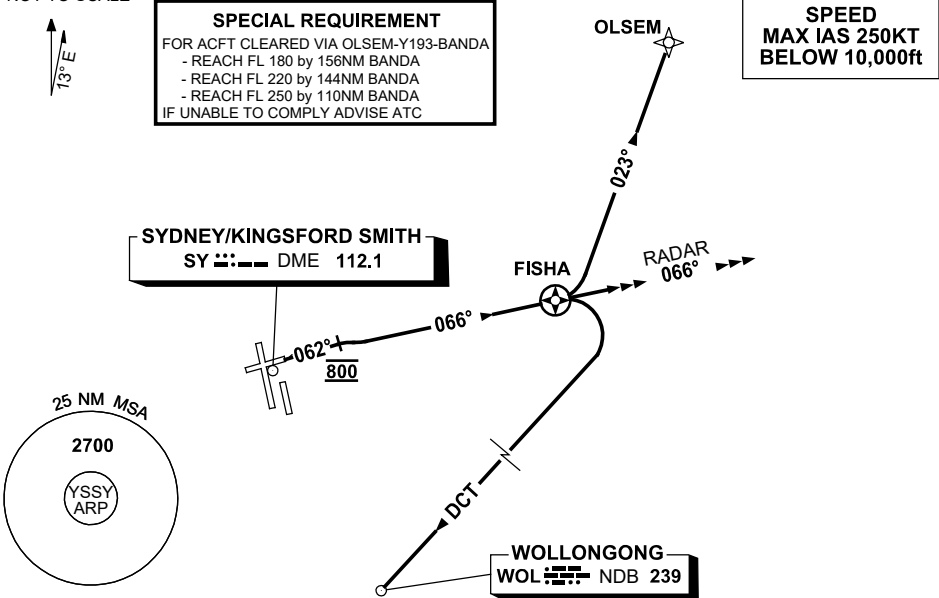


**STANDARD INSTRUMENT DEPARTURES (SID)  
RWY 07 FISHA NINE (JET) (RNAV)  
SYDNEY/KINGSFORD SMITH, NSW (YSSY)**

**30 NOV 2023**

ATIS 118.55 126.25	ACD 133.8	SMC E OF RWY 16R/34L 121.7 W OF RWY 16R/34L 126.5	TWR 120.5	DEP(N) N&E 123.0	DEP(S) S,W&NW 129.7
-----------------------	--------------	---	--------------	---------------------	------------------------

NOT TO SCALE



**DEPARTURE: FISHA NINE**

**RWY 07**

- GRAD 4.7% to 1500ft, then 3.3%
- Track 062°, at 800ft turn RIGHT intercept and track 066° to FISHA then follow transition instructions

**TRANSITIONS:**

**RADAR**

- At FISHA CONTINUE tracking 066°
- Expect radar vectors to cleared route

**WOLLONGONG (WOL)**

- At FISHA turn RIGHT
- Track DCT to WOL NDB, then as cleared

**OLSEM**

- At FISHA turn LEFT
- Track DCT to OLSEM (approx 023°), then as cleared
- See SPECIAL REQUIREMENT above