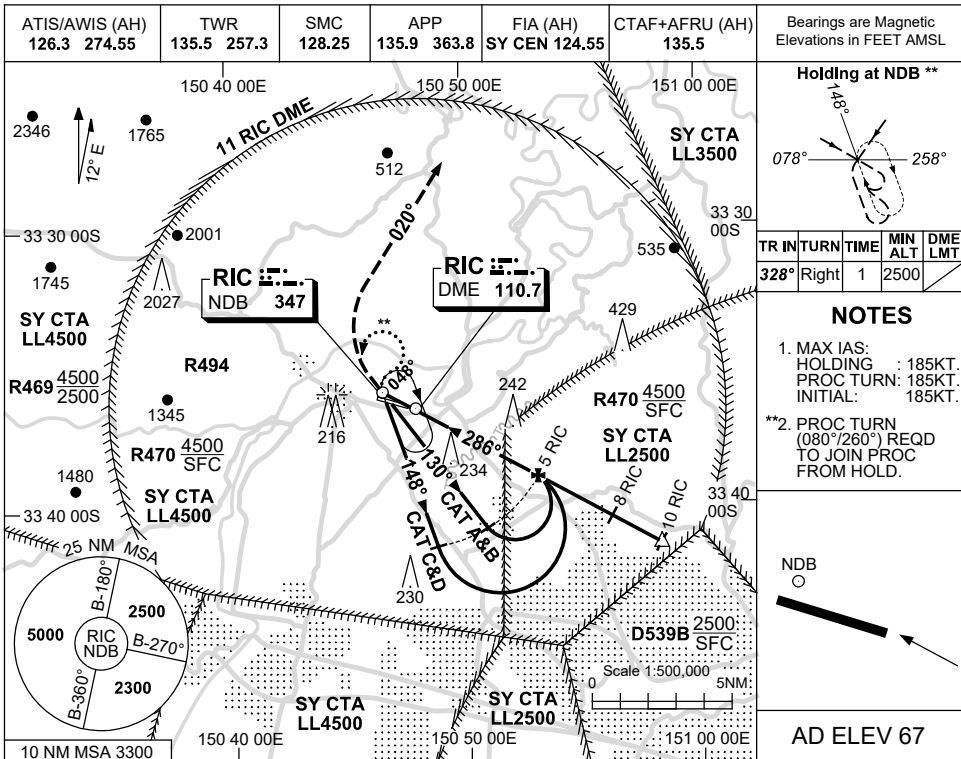


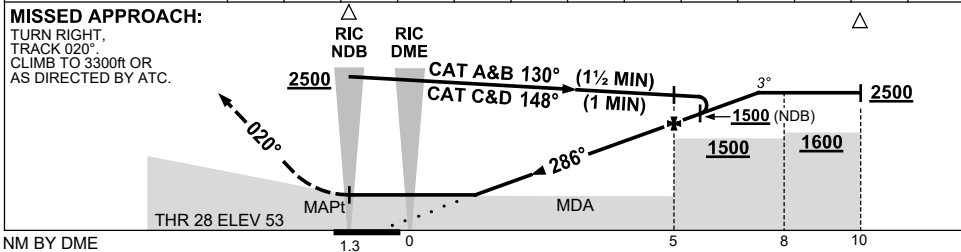
USE QNH

NDB-B or NDB RWY 28  
**RICHMOND, NSW (YSRI)**

21 MAR 2024



DIST BY DME	1.6	2	3	4	4.1	5	6	7	7.3				
ALT (3° APCH PATH)	680	820	1140	1460	1500	1780	2100	2420	2500				



**NOTES**

CATEGORY	A	B	C	D
S-I NDB/DME	<b>750 (697-4.0)</b>			
NDB	CIRCLING ONLY			
CIRCLING	<b>800 (733-2.4)</b>	<b>1090 (1023-4.0)</b>		<b>1160 (1093-5.0)</b>
ALTERNATE	(1233-4.4)	(1523-6.0)		(1593-7.0)

- BRG FLUCTUATIONS UP TO 7° ON 148° OUTBOUND LEG BTN 4 AND 5NM.
- IF MISSED APCH CONDUCTED PRIOR TO NDB CLIMB NOT ABV 2500ft UNTIL NDB.

Changes: VIS.

SRINB01-178