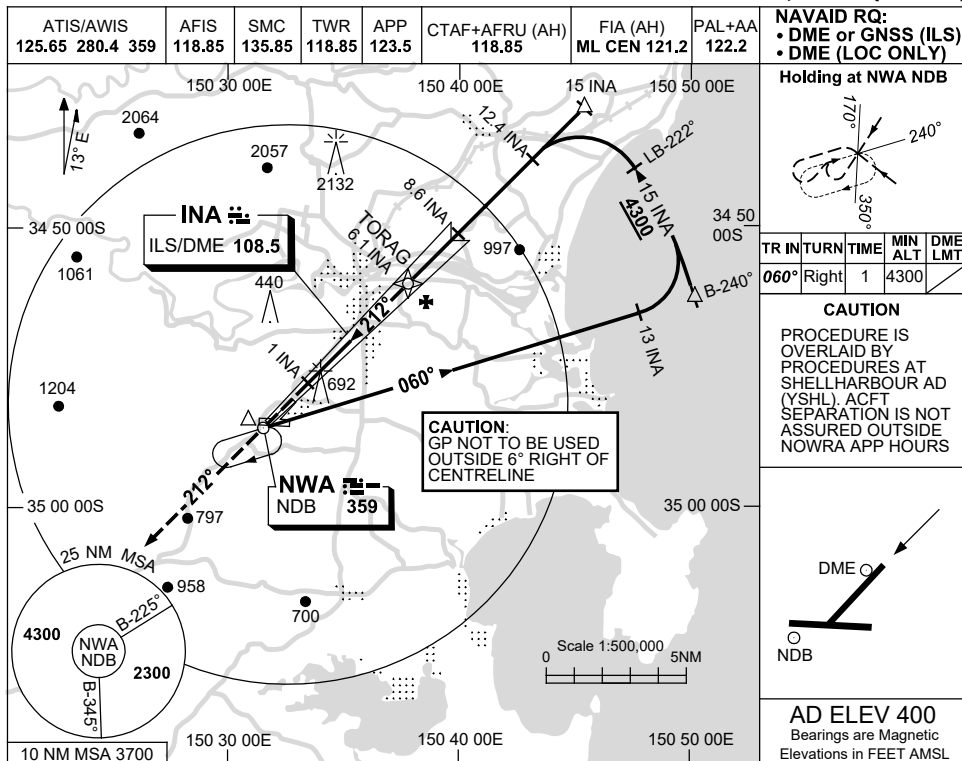


USE QNH

ILS-Z or LOC-Z RWY 21
NOWRA, NSW (YSNW)

21 MAR 2024



NAVAID RQ:
 • DME or GNSS (ILS)
 • DME (LOC ONLY)

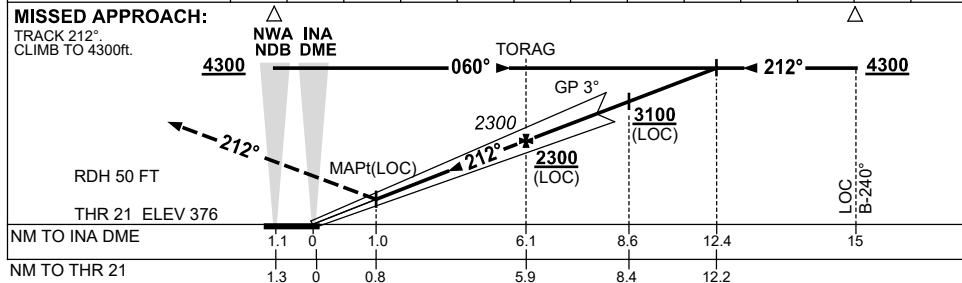
Holding at NWA NDB

TR	IN	TURN	TIME	MIN ALT	DME LMT
060°	Right	1	4300		

CAUTION
 PROCEDURE IS OVERLAID BY PROCEDURES AT SHELL HARBOUR AD (YSHL). ACFT SEPARATION IS NOT ASSURED OUTSIDE NOWRA APP HOURS

AD ELEV 400
 Bearings are Magnetic
 Elevations in FEET AMSL

NM TO INA DME	1.8	2	3	4	5	6.1	7	8	9	10	11	12	12.4
ALT (3° APCH PATH)	930	1000	1320	1640	1960	2300	2590	2910	3230	3550	3870	4180	4300



NOTES

CATEGORY	A	B	C	D
S-I ILS/DME*		700 (324)	1.1 (VIS 0.8 WITH ACTUAL QNH)	
S-I LOC/DME		930 (554-2.4)		
CIRCLING	1320 (920-2.4)		1680 (1280-4.0)	1810 (1410-5.0)
ALTERNATE	(1420-4.4)		(1780-6.0)	(1910-7.0)

1. ACFT MAY BE RADAR VECTORED TO FNA.
 *2. AT DA, RAD ALT WILL INDICATE APPROX 400ft WHEN FCST QNH USED, DUE TO TERRAIN.

Changes: VIS.

SNWII01-178