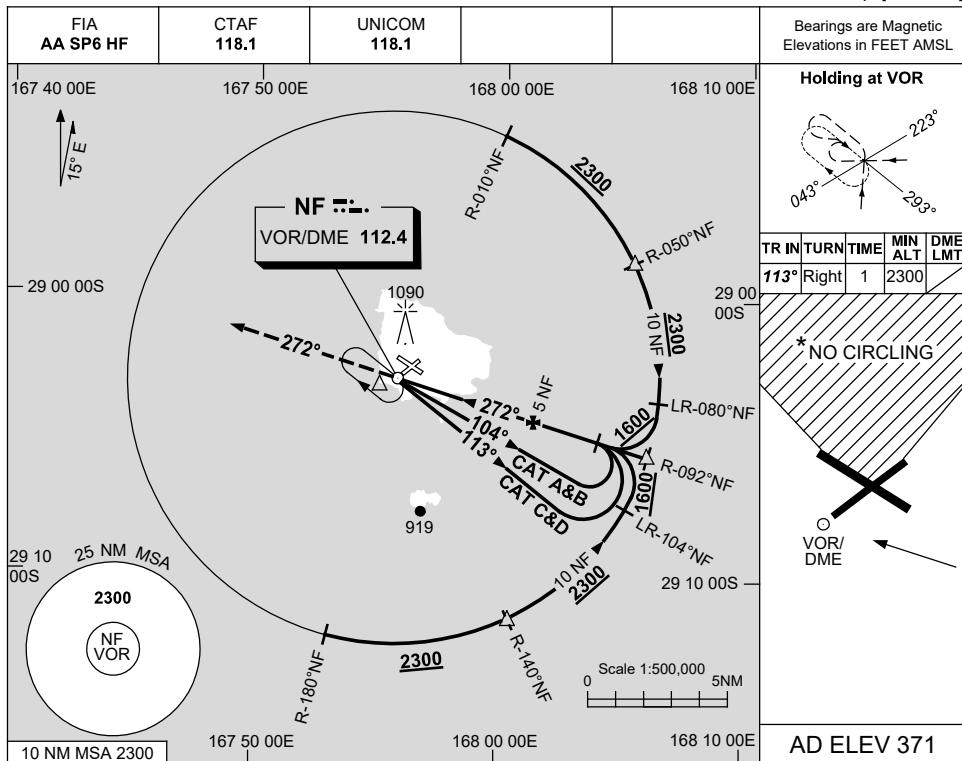


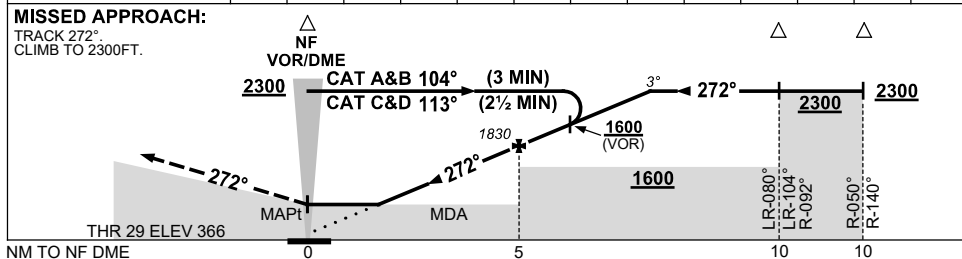
USE QNH

VOR RWY 29
NORFOLK ISLAND, (YSNF)

15 JUN 2023



DIST TO NF DME	2.2	3	4	5	6	6.5				
ALT (3° APCH PATH)	950	1190	1510	1830	2150	2300				



NOTES

CATEGORY	A	B	C	D
S-I VOR/DME	950 (579-3.3)			
S-I VOR	1000 (629-3.6)			
CIRCLING *	1100 (729-2.4)		1160 (789-4.0)	1480 (1109-5.0)
ALTERNATE	(1229-4.4)		(1289-6.0)	(1609-7.0)

1. MAX IAS:
INITIAL : 230KT.
- * 2. NO CIRCLING IN
SECTOR N OF
RWYS 04/22 & 11/29.
3. AWIS (PHONE)
02 9353 6443

Changes: TWR ELEVATION.

SNFVO03-175