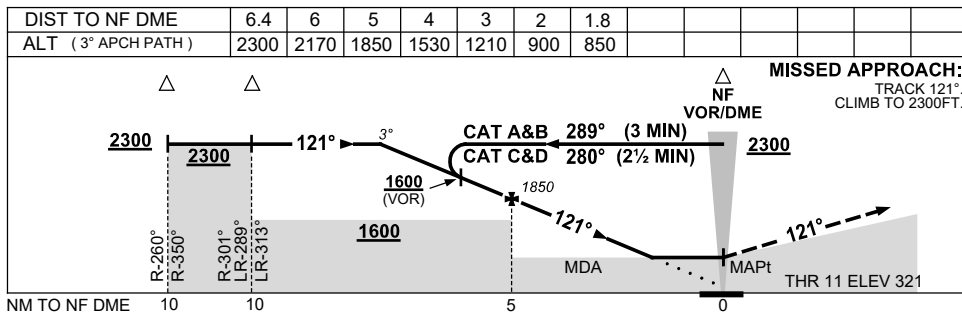
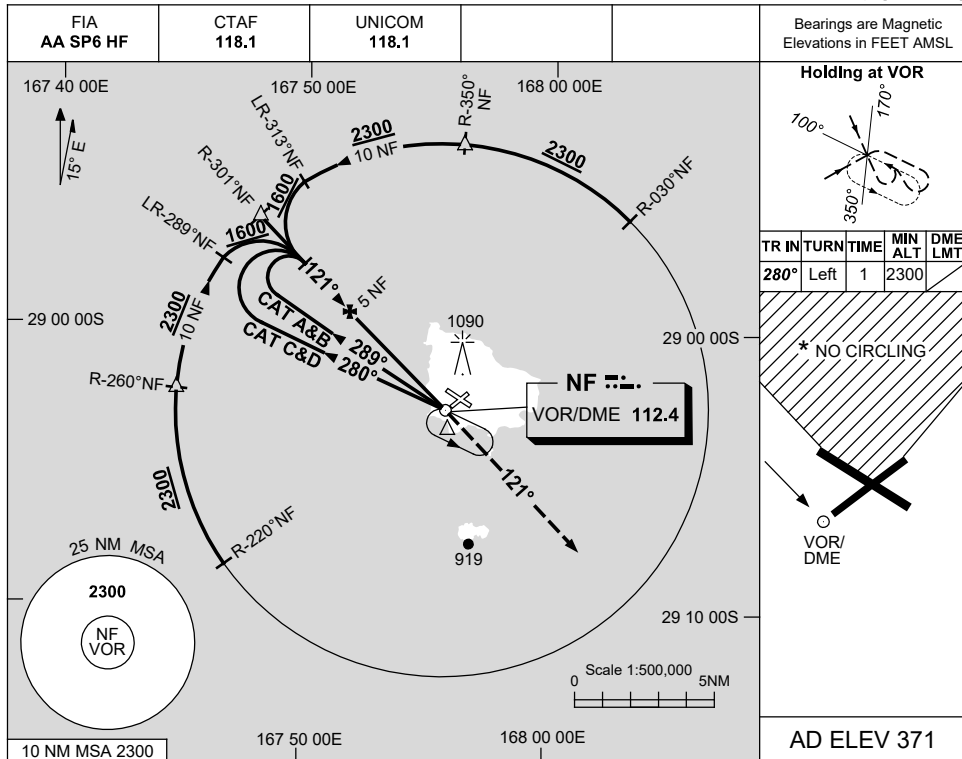


USE QNH

VOR RWY 11

NORFOLK ISLAND, (YSNF)

15 JUN 2023



NOTES

CATEGORY	A	B	C	D
S-I VOR or VOR/DME	850 (529-3.0)			
CIRCLING *	1100 (729-2.4)	1160 (789-4.0)	1480 (1109-5.0)	
ALTERNATE	(1229-4.4)	(1289-6.0)	(1609-7.0)	

1. MAX IAS:
INITIAL : 230KT.
- *2. NO CIRCLING IN SECTOR N OF RWYS 04/22 & 11/29.
3. AWIS (PHONE)
02 9353 6443

Changes: TWR ELEVATION.

SNFVO02-175