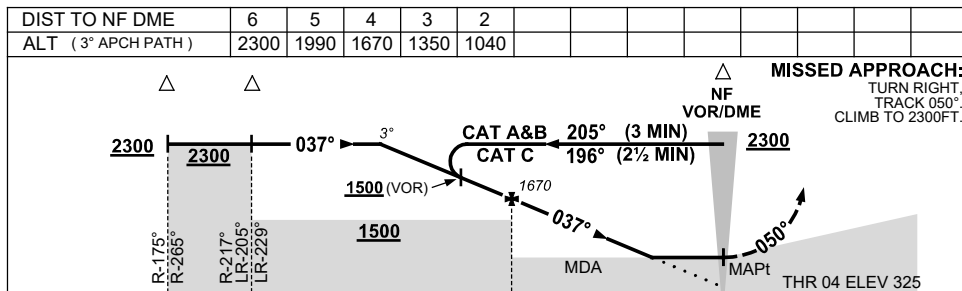
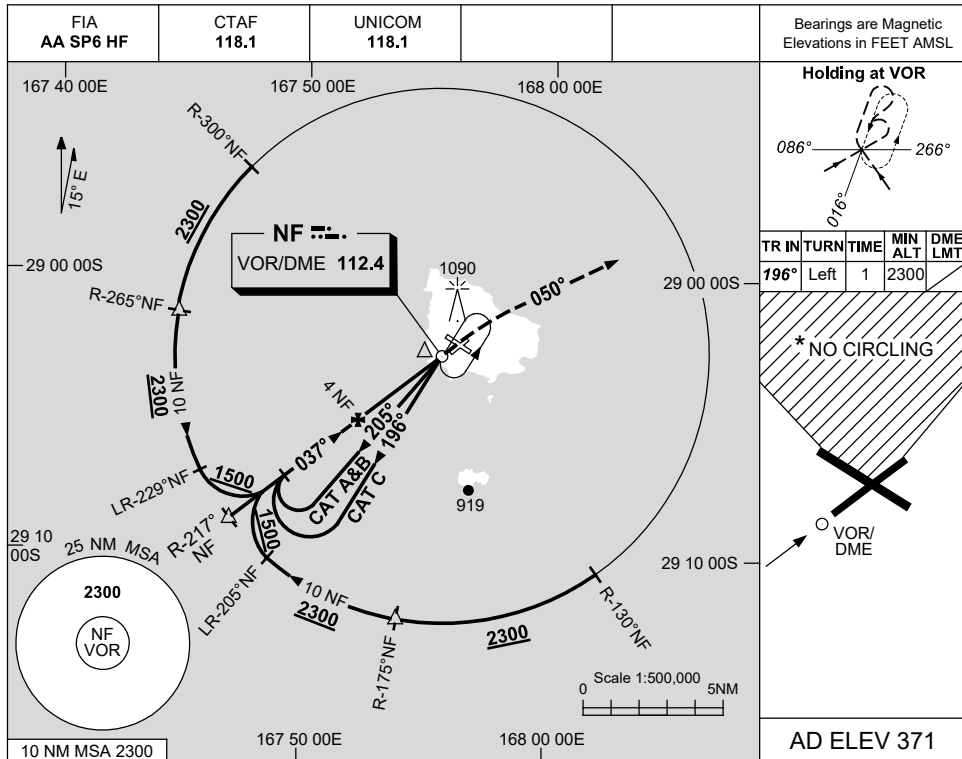


USE QNH

VOR RWY 04
NORFOLK ISLAND, (YSNF)

15 JUN 2023



NOTES

| CATEGORY | A | B | C | D |
|--------------------|-----------------------|---|-----------------------|-----------------------|
| S-I VOR or VOR/DME | 1100 (775-4.4) | | | NOT AUTHORISED |
| CIRCLING* | 1100 (729-2.4) | | 1160 (789-4.0) | |
| ALTERNATE | (1229-4.4) | | (1289-6.0) | |

1. MAX IAS:
 INITIAL : 230KT.
 MAP TURN: 160KT.
- * 2. NO CIRCLING IN
 SECTOR N OF
 RWYS 04/22 & 11/29.
3. AWIS (PHONE)
 02 9353 6443

Changes: TWR ELEVATION.

SNFV001-175