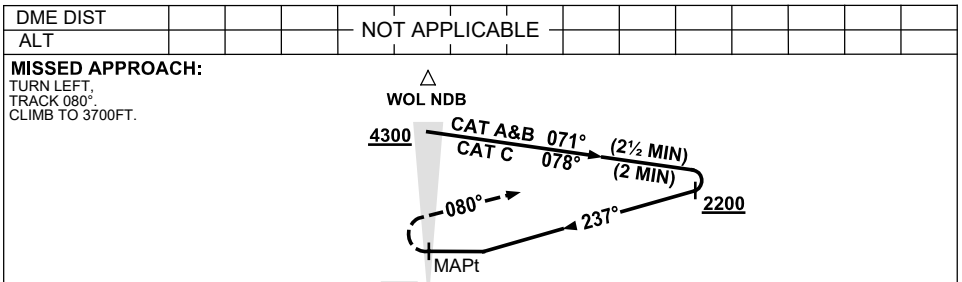
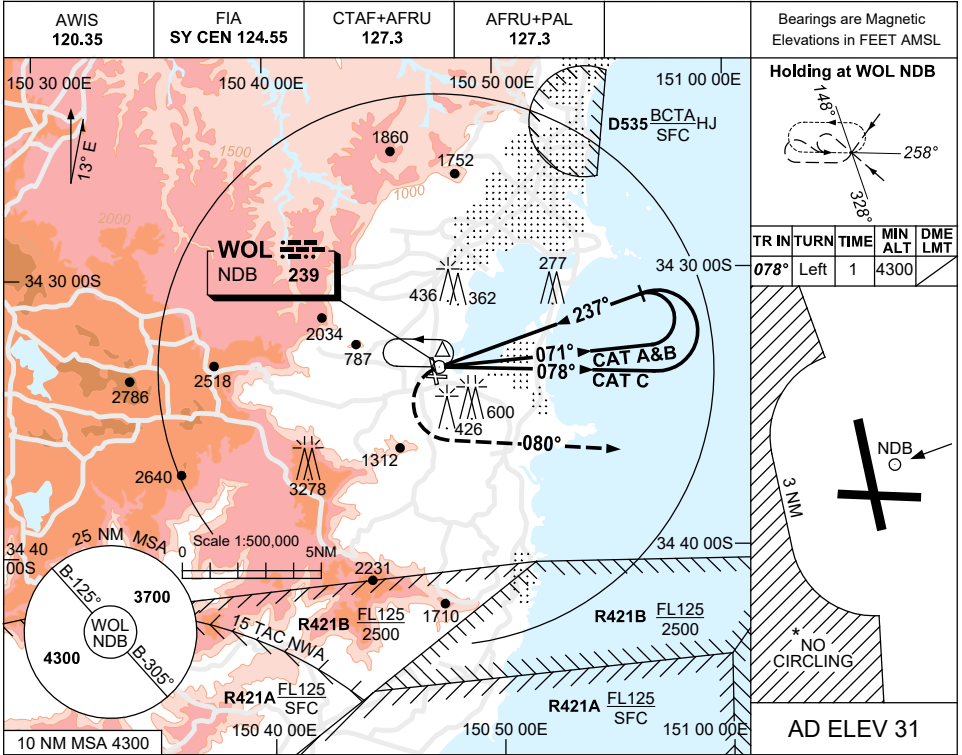


USE QNH

NDB-A

**SHELLHARBOUR AIRPORT, NSW (YSHL)**

8 SEP 2022



**NOTES**

1. MAX IAS :  
HOLDING: 180KT.  
INITIAL :  
CAT A&B : 140KT.  
CAT C : 180KT.  
MAP TURN: 180KT.
- \*2. NO CIRCLING WEST OF RWY 16/34 BEYOND 3NM.
3. COLOUR: SEE SPEC NOTICES.

CATEGORY	A	B	C	D
CIRCLING*	1840 (1809-2.4)		1940 (1909-4.0)	NOT APPLICABLE
ALTERNATE	(2309-4.4)		(2409-6.0)	

Changes: Editorial.

SHLN01-172