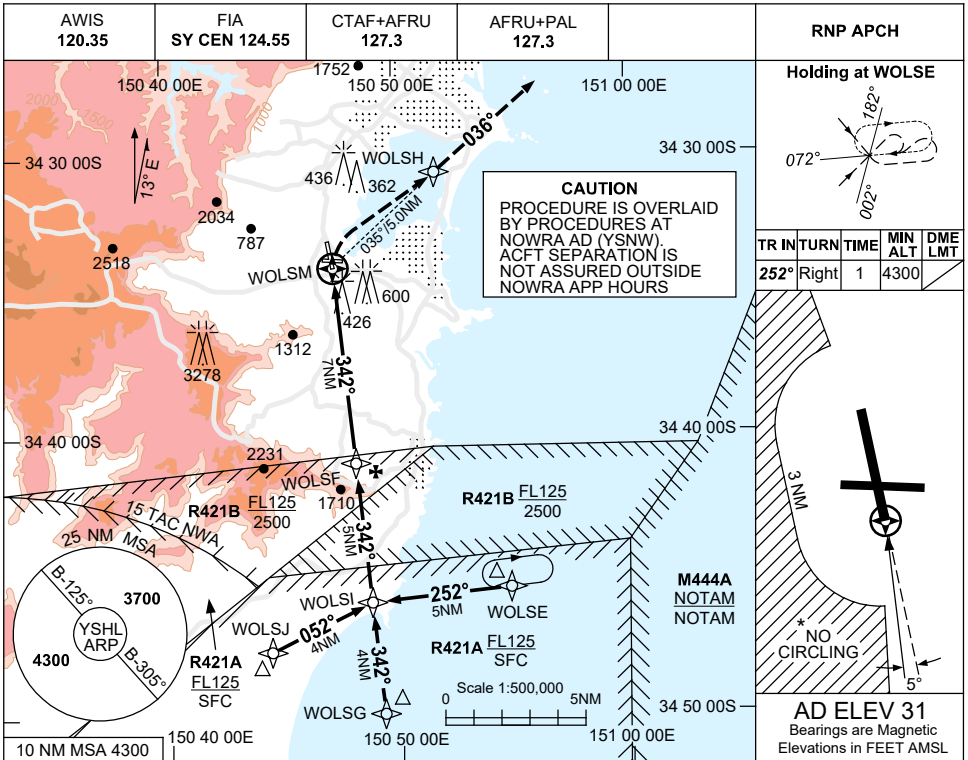


**USE QNH**  
**SHELLHARBOUR AIRPORT, NSW (YSHL)**

RNP RWY 34

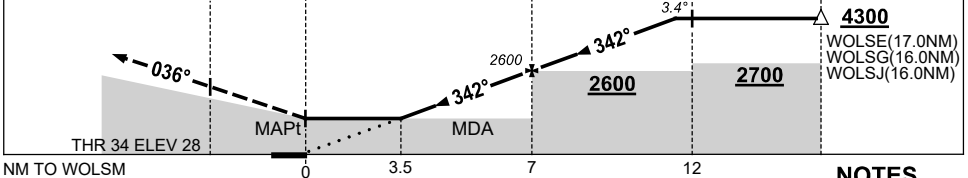
**30 NOV 2023**



NM TO NEXT WPT	WOLSM	3.5	4	5	6	WOLSF	1	2	3	4	4.7	
ALT (3.4° APCH PATH)		1340	1520	1880	2240	2600	2960	3320	3680	4040	4300	

**MISSED APPROACH:**

TURN RIGHT,  
TRACK DCT TO WOLSH, MAHF  
THEN TRACK 036°.  
CLIMB TO 3700ft.



**NOTES**

1. ATC CLR RQ THRU R421. (NOWRA APP 123.5)
2. MAX IAS: INITIAL : 200KT. MAP TURN: 190KT.
- \*3. NO CIRCLING WEST OF RWY 16/34 BEYOND 3NM.
4. COLOUR: SEE SPEC NOTICES.

CATEGORY	A	B	C	D
LNAV	1340 (1309-5.0)			NOT APPLICABLE
CIRCLING *	1840 (1809-2.4)		1940 (1909-4.0)	
ALTERNATE	(2309-4.4)		(2409-6.0)	

Changes: M444A REPLACES R495A, Editorial.

SHLGN02-177