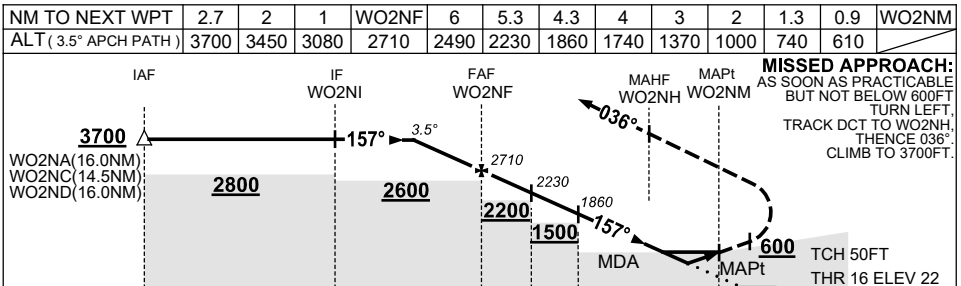
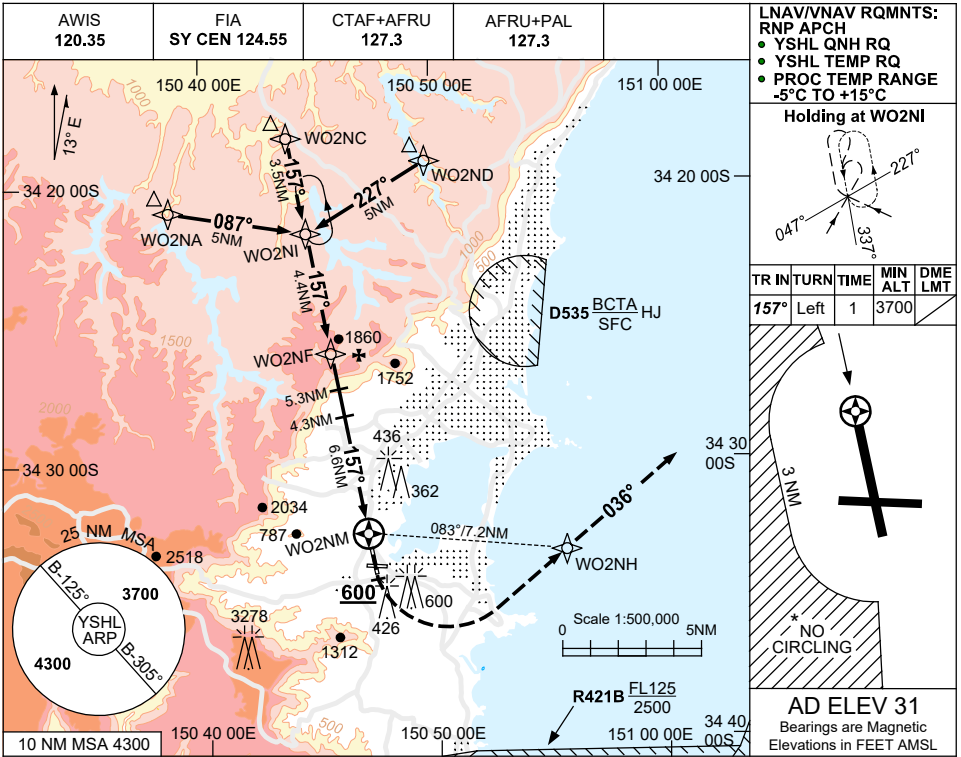


USE QNH

RNP RWY 16

8 SEP 2022

**SHELLHARBOUR AIRPORT, NSW (YSHL)**



CATEGORY	A	B	C	D
LNVA/VNAV	610 (588-2.9)			NOT APPLICABLE
LNAV	740 (718-3.5)			
CIRCLING *	1840 (1809-2.4)		1940 (1909-4.0)	
ALTERNATE	(2309-4.4)		(2409-6.0)	

**NOTES**

- MAX IAS: 230KT.  
 INITIAL HOLDING: 210KT.  
 MAP TURN: 190KT.
- NO CIRCLING WEST OF RWY 16/34 BEYOND 3NM.
- APCH PATH ANGLE DOES NOT COINCIDE WITH PAPI ON GLIDE SLOPE INDICATION.
- COLOUR: SEE SPEC NOTICES.

Changes: Editorial.

SHLGN01-172