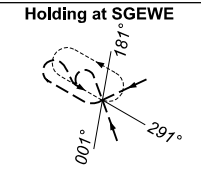
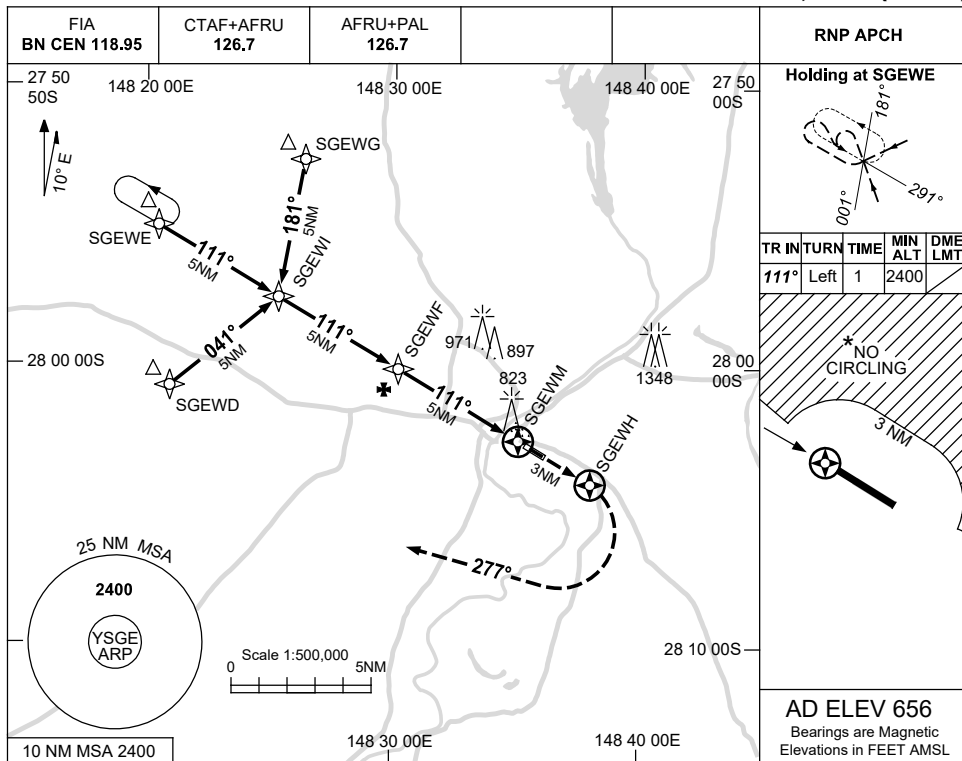


USE QNH

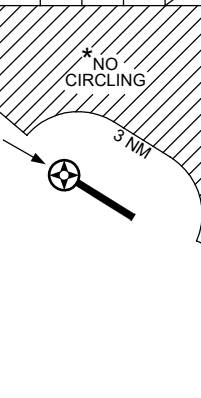
RNP RWY 11

**SAINT GEORGE, QLD (YSGE)**

16 JUN 2022

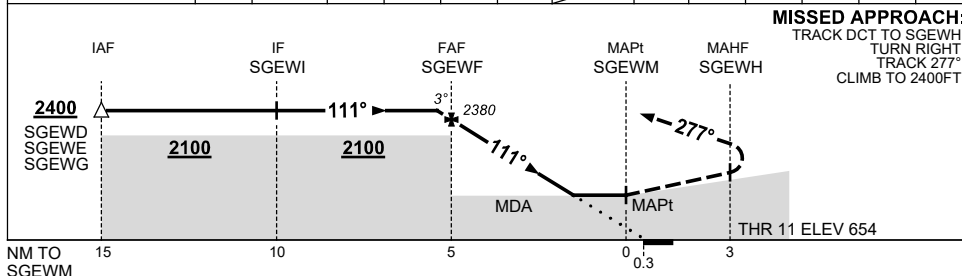


| TR   | IN   | TURN | TIME | MIN  | DME |
|------|------|------|------|------|-----|
|      |      |      |      | ALT  | LMT |
| 111° | Left | 1    |      | 2400 |     |



**AD ELEV 656**  
Bearings are Magnetic  
Elevations in FEET AMSL

| NM TO NEXT WPT     | 0.1  | SGEWF | 4    | 3    | 2    | 1.3  | SGEWM |  |  |  |  |
|--------------------|------|-------|------|------|------|------|-------|--|--|--|--|
| ALT (3° APCH PATH) | 2400 | 2380  | 2070 | 1750 | 1430 | 1210 |       |  |  |  |  |



**MISSED APPROACH:**  
TRACK DCT TO SGEWH,  
TURN RIGHT,  
TRACK 277°,  
CLIMB TO 2400FT.

**NOTES**

| CATEGORY  | A              | B | C              | D              |
|-----------|----------------|---|----------------|----------------|
| LNAV      | 1210 (554-3.1) |   |                | NOT APPLICABLE |
| CIRCLING* | 1250 (594-2.4) |   | 1350 (694-4.0) |                |
| ALTERNATE | (1094-4.4)     |   | (1194-6.0)     |                |

- MAX IAS: INITIAL : 230KT.
- NO CIRCLING BEYOND 3NM NORTH OF RWY 11/29.

Changes: CHART TITLE, PBN SPECIFICATION BOX.

SGEGN01-171