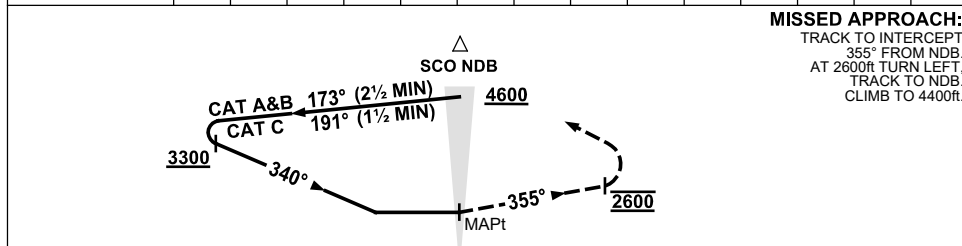


DME DIST		NOT APPLICABLE	
ALT			



NOTES

1. MAX IAS:
INITIAL :
CAT C : 200KT.
HOLDING : 190KT.
MAP TURN: 190KT.
- * 2. NO CIRCLING BEYOND 3NM.
3. COLOUR: SEE SPEC NOTICES.

CATEGORY	A	B	C	D
CIRCLING *	2040 (1295-2.4)		2530(1785-4.0)	NOT APPLICABLE
ALTERNATE	(1795-4.4)		(2285-6.0)	

Changes: ADDED D566A. Editorial.

SCONB01-177