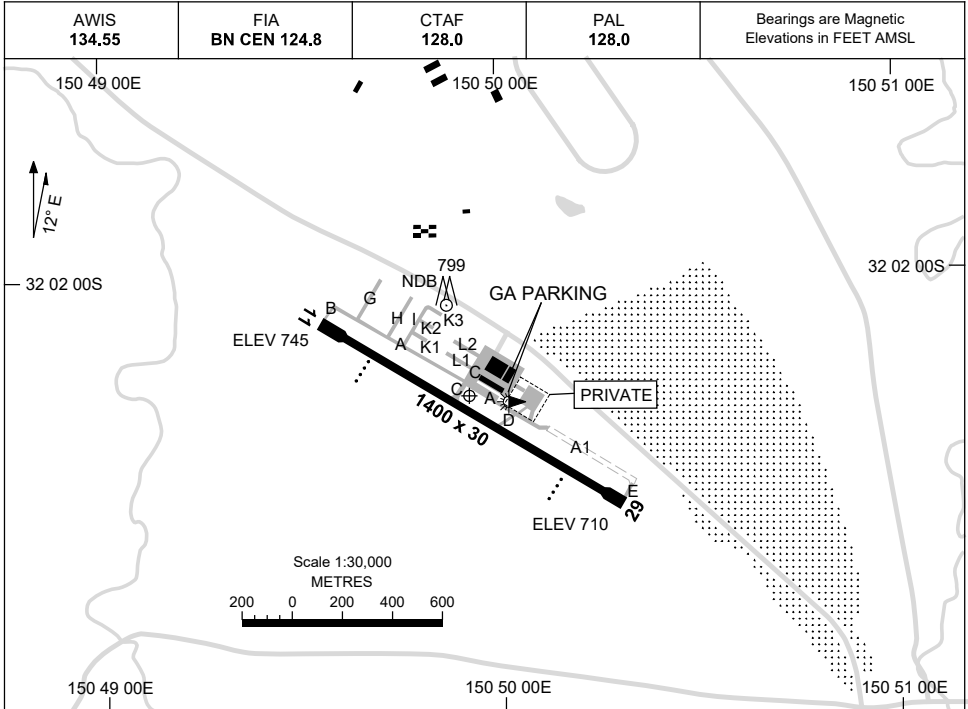


15 JUN 2023

AD ELEV 745  
32 02 14S 150 49 56E

AERODROME CHART  
**SCONE, NSW (YSCO)**



|                              | <b>AERODROME LIGHTING</b>                      |
|------------------------------|------------------------------------------------|
| <b>RWY</b>                   | TAXIWAY : BLUE EDGE ON TWY C<br>RL : PAL 128.0 |
| <b>11</b> <small>110</small> | LIRL PAPI RIGHT SIDE 3.0° 45FT                 |
| <small>290</small> <b>29</b> | LIRL PAPI LEFT SIDE 3.0° 46FT                  |

**NOTES**

1. **CAUTION:** THE PILOT IN COMMAND SHOULD BE AWARE OF THE TERRAIN AND OBSTACLES IN THE CIRCLING AREA PRIOR TO CONDUCTING NIGHT IFR OPERATIONS INTO SCONE.
2. AWIS RQ 1 SEC TRANSMIT PULSES TO ACTIVATE.
3. FIA FREQ 124.8 AVBL 4000FT.
4. PAL RQ THREE ONE SECOND PULSES TO ACTIVATE.