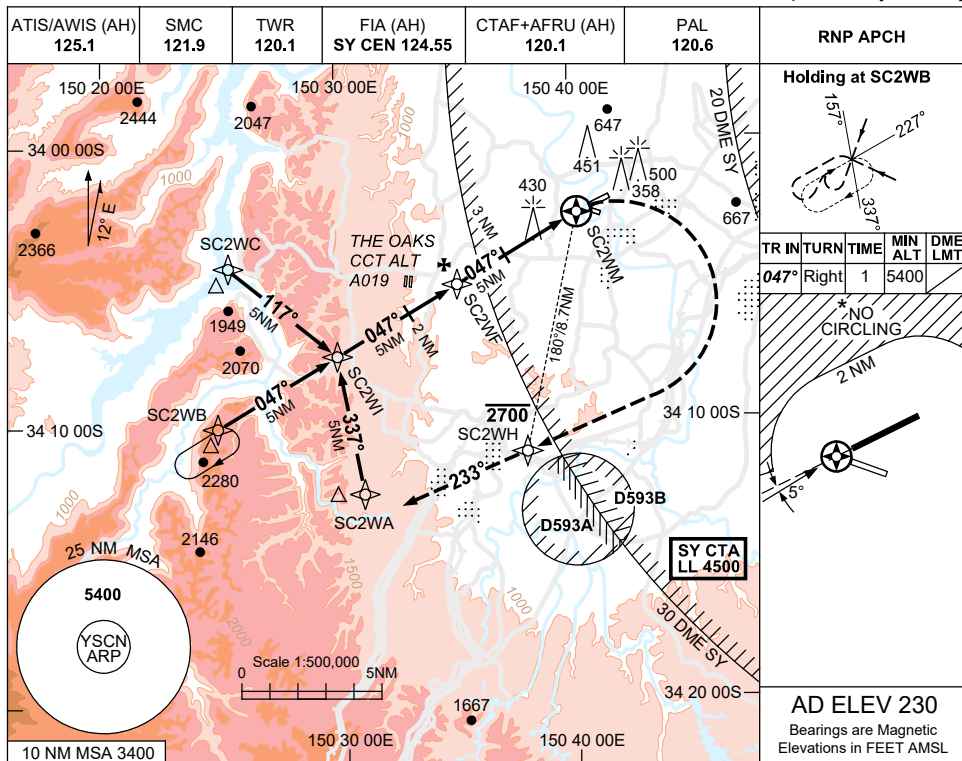


USE QNH

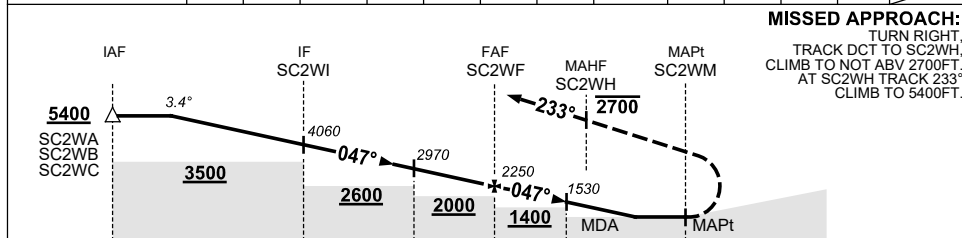
RNP W

1 DEC 2022

CAMDEN, NSW (YSCN)



NM TO NEXT WPT	3.7	2	SC2WI	4	3	2	1	SC2WF	4	3	2.8	1.7	SC2WM
ALT (3.4° APCH PATH)	5400	4780	4060	3700	3340	2970	2610	2250	1890	1530	1480	1060	



CATEGORY	A	B	C	D
CIRCLING *	1060 (830-2.4)	1480 (1250-4.0)		NOT APPLICABLE
ALTERNATE	(1330-4.4)	(1750-6.0)		

NOTES

- MAX IAS:
INITIAL : 210KT.
MAP TURN: 195KT.
- NO CIRCLING NTH OF RWY 06/24 BEYOND 2NM.
- ACFT TO CALL CN TWR PRIOR TO SC2WI.
- TRAINING RESTR: SEE ERSA.
- COLOUR: SEE SPEC NOTICES.

Changes: WPT NAMING CONVENTION, MAP SPEED, MAHF ALT RESTRICTION, Editorial. SCNGN01-173