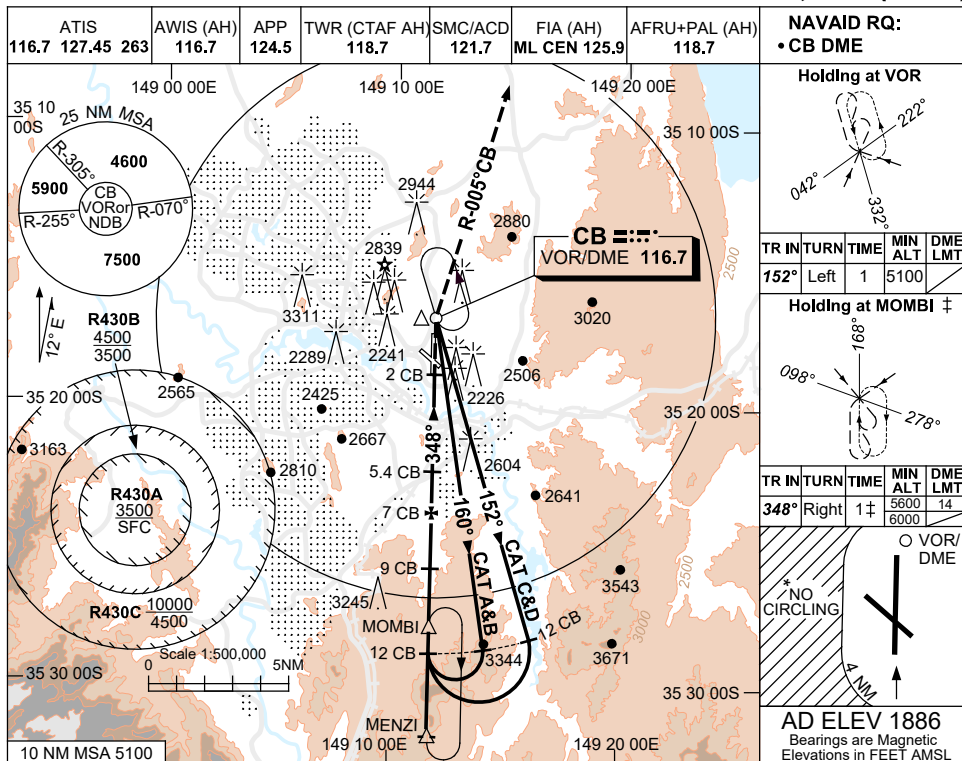


USE QNH

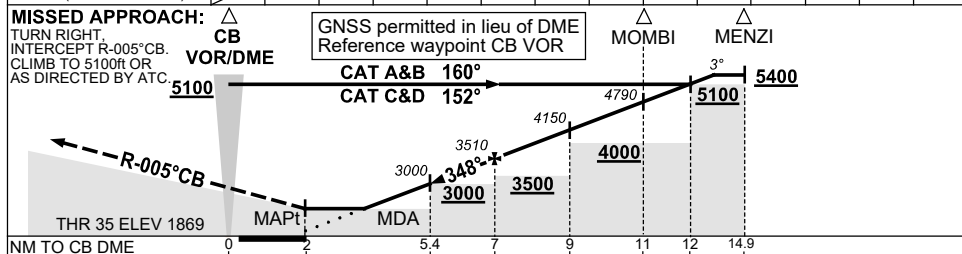
VOR RWY 35
CANBERRA, ACT (YSCB)

30 NOV 2023



NAVAID RQ: • CB DME				
Holding at VOR				
TR	IN	TURN	TIME	MIN ALT DME LMT
152°	Left	1	5100	
Holding at MOMB I ‡				
TR	IN	TURN	TIME	MIN ALT DME LMT
348°	Right	1 ‡	5600 6000	14
AD ELEV 1886				
Bearings are Magnetic Elevations in FEET AMSL				

DIST TO CB DME	MAPt	5	5.4	6	7	8	9	10	11	12	12.9
ALT (3° APCH PATH)		2880	3000	3190	3510	3830	4150	4470	4790	5100	5400



NM TO CB DME	0	2	3.4	5	7	9	11	12	14.9
NM TO THR 35	0	0	3.4	5	7	9	10	12.9	

- NOTES**
- ‡1. MAX IAS:
HLDG AT MOMB I
5600ft: 170KT.
6000ft: 210KT.
MAP TURN: 230KT.
 - *2. NO CIRCLING
BEYOND 4NM WEST OF
RWY 17/35.
 - 3. ACFT MAY BE RADAR
VECTORED TO IAF.
 - 4. COLOUR: SEE
SPEC NOTICES.

CATEGORY	A	B	C	D
S-I VOR/DME	2880 (1011-4.9)			
CIRCLING *	3350 (1464-2.4)	3580 (1694-4.0)	3720 (1834-5.0)	
ALTERNATE	(1964-4.4)	(2194-6.0)	(2334-7.0)	

Changes: MINIMA, SDF, MOMB I HOLDING, NEW LOGO, Editorial. SCBVO02-177