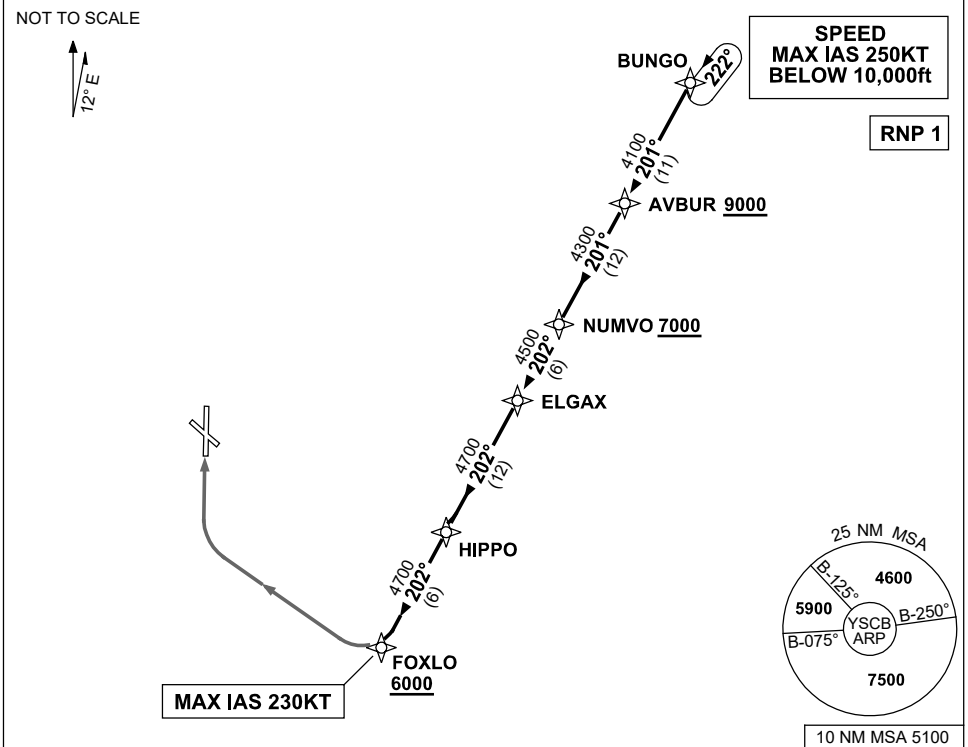


**STANDARD ARRIVAL ROUTE (STAR)  
BUNGO FIVE WHISKEY ARRIVAL (NON-JET) (RNAV)  
CANBERRA, ACT (YSCB)**

**7 SEP 2023**

ATIS 116.7 127.45 263	AWIS (AH) 116.7	APP 124.5	TWR 118.7	SMC/ACD 121.7	FIA (AH) ML CEN 125.9	CTAF+AFRU (AH) AFRU+PAL (AH) 118.7	Bearings are Magnetic Elevations in FEET AMSL
--------------------------	--------------------	--------------	--------------	------------------	--------------------------	--	--



**ARRIVAL: BUNGO FIVE WHISKEY  
RWY 35:**

- From BUNGO track 201° to AVBUR  
**Cross** AVBUR AT or ABV 9000ft
- Track 201° to NUMVO  
**Cross** NUMVO AT or ABV 7000ft
- Turn RIGHT, track 202° to ELGAX
- Track 202° to HIPPO
- Track 202° to FOXLO  
**Cross** FOXLO AT or ABV 6000ft  
**MAX IAS** 230KT from FOXLO
- Track via RNP W RWY 35 (AR) approach

**COMMUNICATIONS FAILURE: PROCEDURE IN IMC**

- Squawk 7600, comply with vertical navigation requirements, but not below MSA.
- Track via the latest STAR clearance to the nominated runway, then fly the most suitable approach in accordance with ERS A EMERG Section 1.5.

Changes: REVISED PROC.

SCBSR15-1176