

**STANDARD ARRIVAL ROUTE (STAR)
BUNGO FIVE YANKEE ARRIVAL (NON-JET) (RNAV)
CANBERRA, ACT (YSCB)**

7 SEP 2023

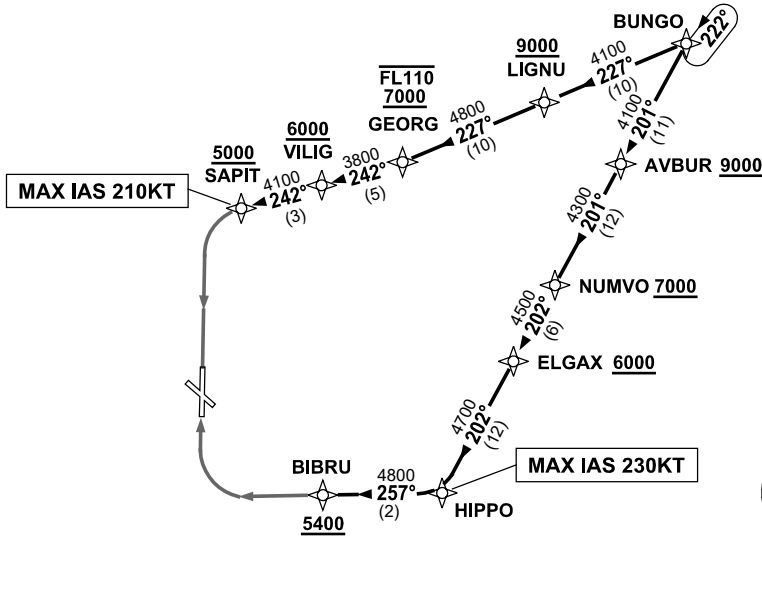
ATIS 116.7 127.45 263	AWIS (AH) 116.7	APP 124.5	TWR 118.7	SMC/ACD 121.7	FIA (AH) ML CEN 125.9	CTAF+AFRU (AH) AFRU+PAL (AH) 118.7	Bearings are Magnetic Elevations in FEET AMSL
--------------------------	--------------------	--------------	--------------	------------------	--------------------------	--	--

NOT TO SCALE



**SPEED
MAX IAS 250KT
BELOW 10,000ft**

RNP 1



ARRIVAL: BUNGO FIVE

RWY 17 YANKEE:

- From BUNGO track 227° to LIGNU
Cross LIGNU AT or ABV 9000FT
- Track 227° to GEORG
Cross GEORG BTN 7000FT and FL110
- Turn RIGHT, track 242° to VILIG
Cross VILIG AT or ABV 6000FT
- Track 242° to SAPIT
Cross SAPIT AT or ABV 5000ft
MAX IAS 210KT from SAPIT
- Track via RNP Y RWY 17 (AR) approach

RWY 35 YANKEE:

- From BUNGO track 201° to AVBUR
Cross AVBUR AT or ABV 9000FT
- Track 201° to NUMVO
Cross NUMVO AT or ABV 7000FT
- Turn RIGHT, track 202° to ELGAX
Cross ELGAX AT or ABV 6000FT
- Track 202° to HIPPO
MAX IAS 230KT from HIPPO
- Turn RIGHT track 257° to BIBRU
Cross BIBRU AT or ABV 5400ft
- Track via RNP Y RWY 35 (AR)

COMMUNICATIONS FAILURE: PROCEDURE IN IMC

- Squawk 7600, comply with vertical navigation requirements, but not below MSA.
- Track via the latest STAR clearance to the nominated runway, then fly the most suitable approach in accordance with ERSA EMERG Section 1.5.

Changes: REVISED PROC.

SCBSR14-116