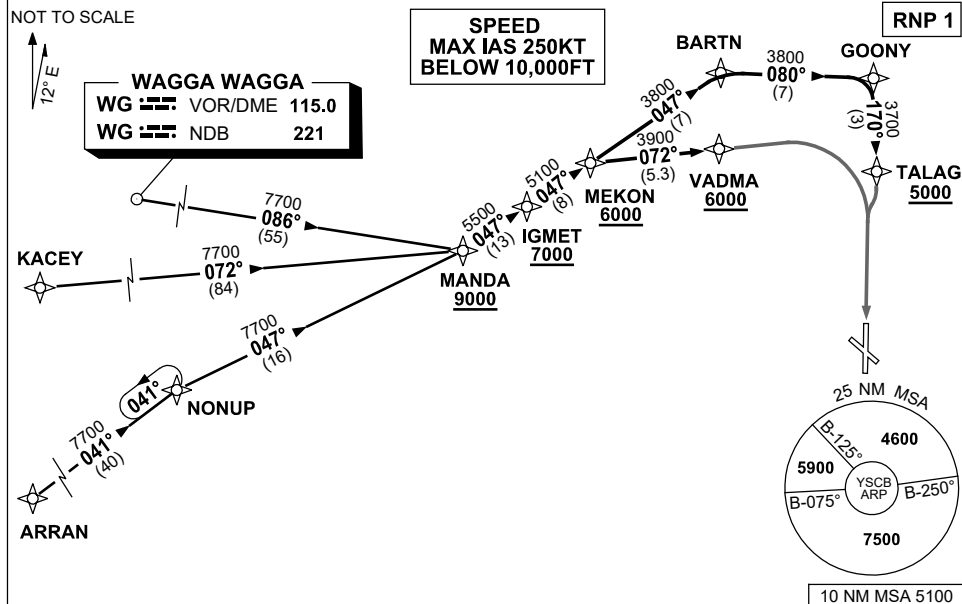


**STANDARD ARRIVAL ROUTE (STAR)  
MANDA THREE ALPHA, X-RAY, ARRIVALS (RNAV)  
CANBERRA, ACT (YSCB)**

7 SEP 2023

|                          |                    |              |              |                  |                          |  |  |
|--------------------------|--------------------|--------------|--------------|------------------|--------------------------|--|--|
| ATIS<br>116.7 127.45 263 | AWIS (AH)<br>116.7 | APP<br>124.5 | TWR<br>118.7 | SMC/ACD<br>121.7 | FIA (AH)<br>ML CEN 125.9 | CTAF+AFRU (AH)<br>AFRU+PAL (AH)<br>118.7 | Bearings are Magnetic<br>Elevations in FEET AMSL |
|--------------------------|--------------------|--------------|--------------|------------------|--------------------------|--|--|



**TRANSITIONS:**

**WAGGA:** From WG VOR or NDB to MANDA:  
(WG)

- Track 086° to MANDA
- Cross MANDA AT or ABV 9000ft
- Then follow ARRIVAL instructions

**KACEY:** From KACEY to MANDA:

- Track 072° to MANDA
- Cross MANDA AT or ABV 9000ft
- Then follow ARRIVAL instructions

**ARRAN:** From ARRAN to MANDA:

- Track 041° to NONUP
- Turn RIGHT, track 047° to MANDA
- Cross MANDA AT or ABV 9000ft
- Then follow ARRIVAL instructions

**ARRIVAL: MANDA THREE**

**RWY 17 ALPHA:**

- From MANDA track 047° to IGMET  
Cross IGMET AT or ABV 7000ft
- Track 047° to MEKON  
Cross MEKON AT or ABV 6000ft
- Track 047° to BARTN
- Turn RIGHT, track 080° to GOONY
- Turn RIGHT, track 170° to TALAG  
Cross TALAG AT or ABV 5000ft
- Track via RNP W RWY 17 (AR) or VOR RWY 17

**RWY 17 X-RAY:**

- From MANDA track 047° to IGMET  
Cross IGMET AT or ABV 7000ft
- Track 047° to MEKON  
Cross MEKON AT or ABV 6000ft
- Turn RIGHT, track 072° to VADMA  
Cross VADMA AT or ABV 6000ft
- Track via RNP X RWY 17 (AR)

**COMMUNICATIONS FAILURE: PROCEDURE IN IMC**

- Squawk 7600, comply with vertical navigation requirements, but not below MSA.
- Track via the latest STAR clearance to the nominated runway, then fly the most suitable approach in accordance with ERSA EMERG Section 1.5.

Changes: REVISED PROC.

SCBSR06-116