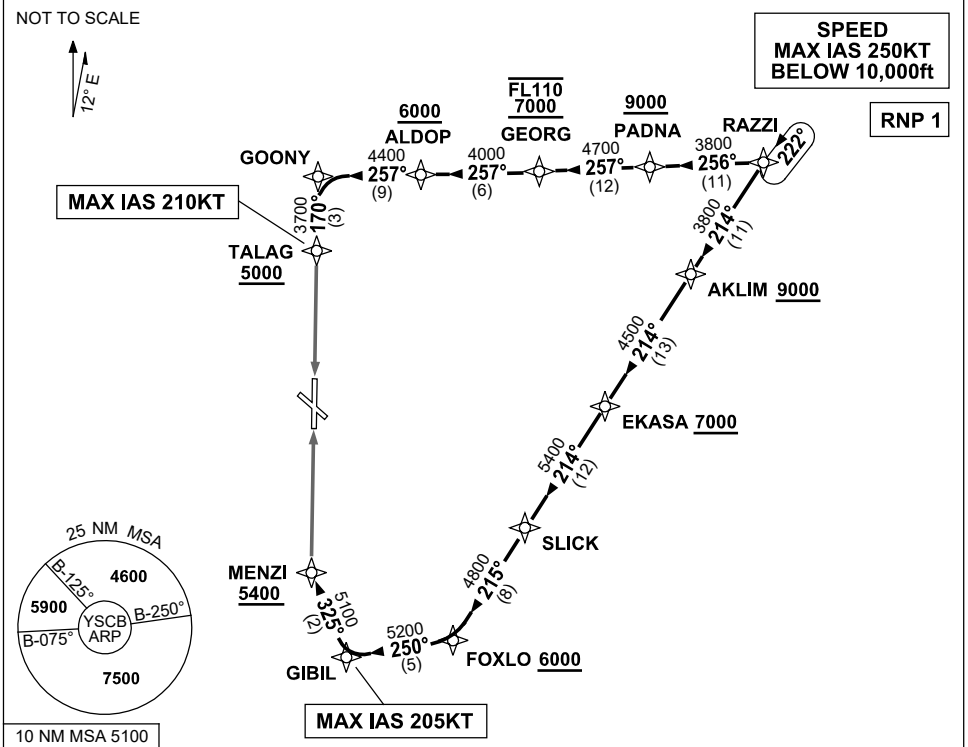


**STANDARD ARRIVAL ROUTE (STAR)
RAZZI EIGHT ALPHA ARRIVAL (JET) (RNAV)
CANBERRA, ACT (YSCB)**

7 SEP 2023

| | | | | | | | |
|--------------------------|--------------------|--------------|--------------|------------------|--------------------------|--|--|
| ATIS 116.7 127.45 263 | AWIS (AH) 116.7 | APP 124.5 | TWR 118.7 | SMC/ACD 121.7 | FIA (AH) ML CEN 125.9 | CTAF+AFRU (AH) AFRU+PAL (AH) 118.7 | Bearings are Magnetic Elevations in FEET AMSL |
|--------------------------|--------------------|--------------|--------------|------------------|--------------------------|--|--|



ARRIVAL: RAZZI EIGHT

RWY 17 ALPHA:

- From RAZZI track 256° to PADNA
Cross PADNA AT or ABV 9000ft
- Turn RIGHT, track 257° to GEORG
Cross GEORG BTN 7000ft and FL110
- Track 257° to ALDOP
Cross ALDOP AT or ABV 6000ft
- Track 257° to GOONY
- Turn LEFT, track 170° to TALAG
Cross TALAG AT or ABV 5000ft
MAX IAS 210KT from TALAG
- Track via RNP W RWY 17 (AR) or VOR RWY 17 approach

RWY 35 ALPHA:

- From RAZZI track 214° to AKLIM
Cross AKLIM AT or ABV 9000ft
- Track 214° to EKASA
Cross EKASA AT or ABV 7000ft
- Track 214° to SLICK
- Turn RIGHT, track 215° to FOXLO
Cross FOXLO AT or ABV 6000ft
- Turn RIGHT, track 250° to GIBIL
MAX IAS 205KT from GIBIL
- Turn RIGHT, track 325° to MENZI
Cross MENZI AT or ABV 5400ft
- Track via ILS, RNP Z, LOC or VOR RWY 35 approach.

COMMUNICATIONS FAILURE: PROCEDURE IN IMC

- Squawk 7600, comply with vertical navigation requirements, but not below MSA.
- Track via the latest STAR clearance to the nominated runway, then fly the most suitable approach in accordance with ERS A EMERG Section 1.5.

Changes: REVISED PROC.

SCBSR04-176