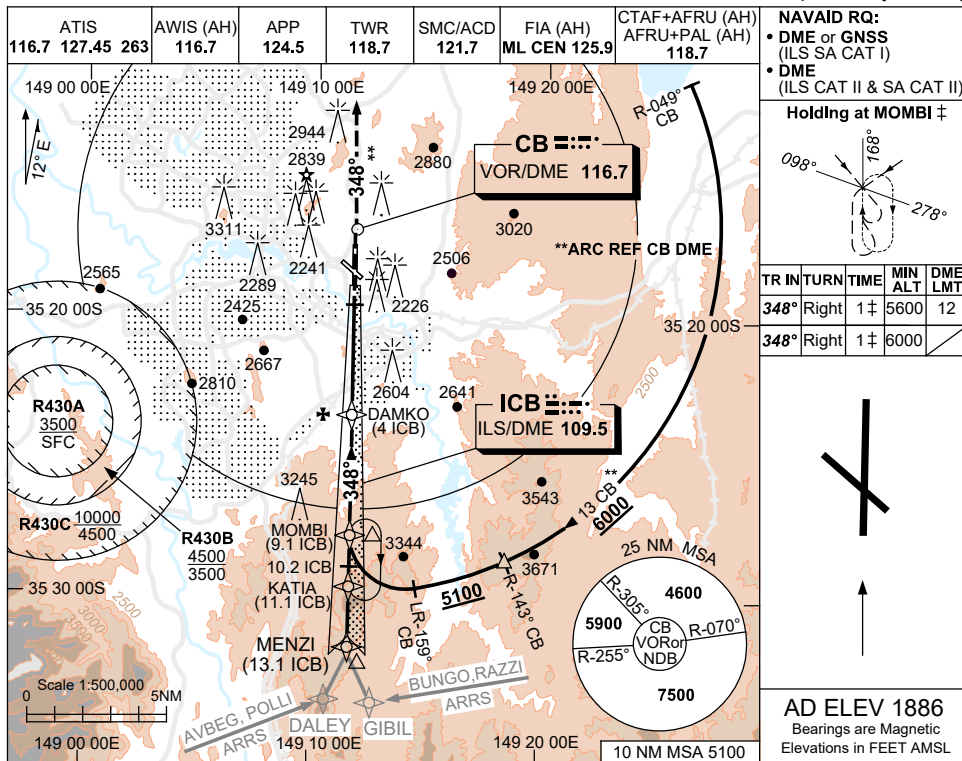


30 NOV 2023



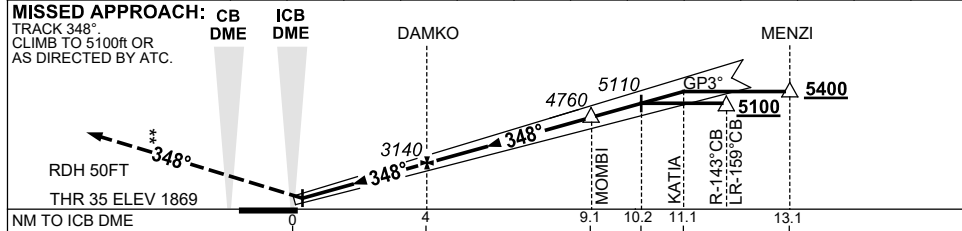
NAVAID RQ:
 • DME or GNSS (ILS SA CAT I)
 • DME (ILS CAT II & SA CAT II)

Holding at MOMBI ‡

TR IN	TURN	TIME	MIN ALT	DME LMT
348°	Right	1 ‡	5600	12
348°	Right	1 ‡	6000	

AD ELEV 1886
 Bearings are Magnetic
 Elevations in FEET AMSL

NM TO ICB DME	1	2	3	4	5	6	7	8	9.1	10	10.2	11.1	
ALT (3° APCH PATH)	2200	2500	2820	3140	3460	3780	4100	4410	4760	5050	5110	5370	5400



NM TO ICB DME	0	3.8	8.9	10	10.9	12.9
NM TO THR 35	0	3.8	8.9	10	10.9	12.9

- NOTES**
- SPECIAL AIRCREW & ACFT CERTIFICATION REQUIRED.
 - MAX IAS:
 HLDG AT MOMBI 5600ft: 170KT, 6000ft: 210KT.
 - MIN MAP GRAD TO 3200ft, THEN 2.5%.
 - CAT A-C 350 RVR CAT D 400RVR.
 - COLOUR: SEE SPEC NOTICES.

CATEGORY	A	B	C	D
S-I ILS CAT II# (4.6% MAP) ‡	RA 101 DA 1969 (100) 350 RVR			
S-I ILS SA CAT II# (4.6% MAP) ‡	RA 101 DA 1969 (100) 350/400 RVR §			
S-I ILS SA CAT I # (3.8% MAP) ‡	RA 152 DA 2019 (150) 450 RVR			

Changes: MOMBI HOLD ALT, NEW LOGO, Editorial.

SCBII03-177