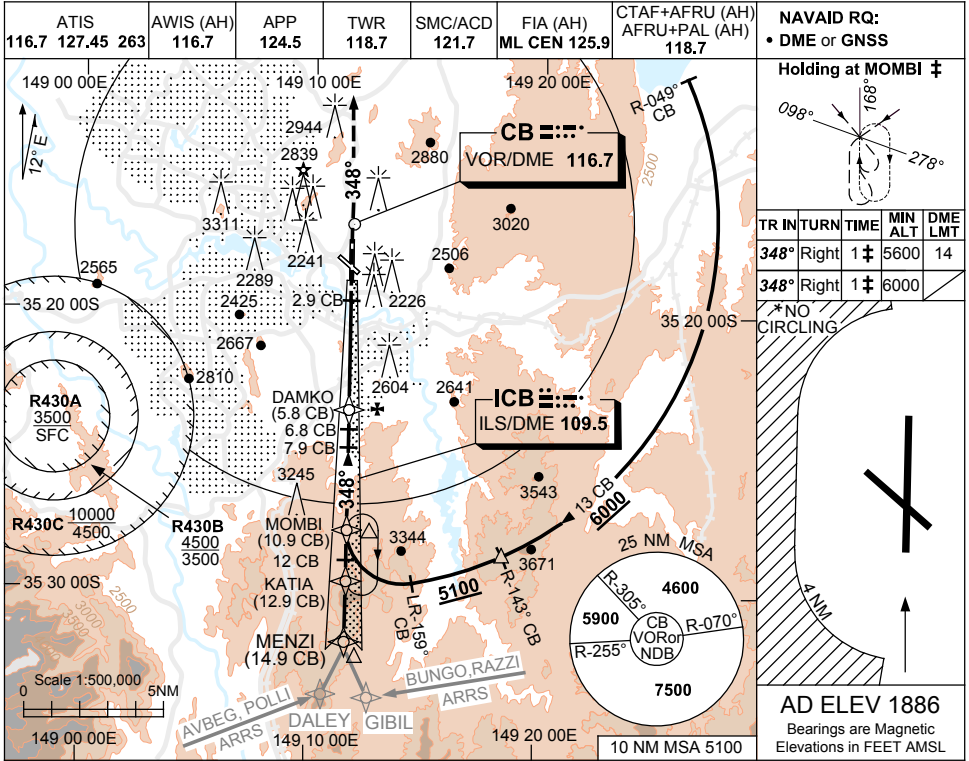


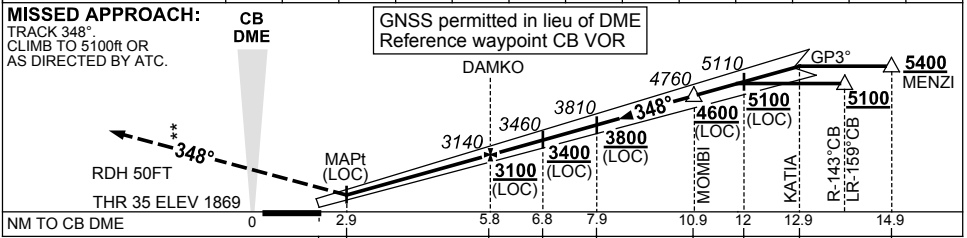
USE QNH

ILS-Y or LOC-Y RWY 35  
**CANBERRA, ACT (YSCB)**

21 MAR 2024



|                    |      |      |      |      |      |      |      |      |      |      |      |      |
|--------------------|------|------|------|------|------|------|------|------|------|------|------|------|
| NM TO CB DME       | 4.5  | 5    | 5.8  | 6.8  | 7    | 7.9  | 9    | 10   | 10.9 | 11   | 12   | 12.9 |
| ALT (3° APCH PATH) | 2700 | 2870 | 3140 | 3460 | 3510 | 3810 | 4150 | 4470 | 4760 | 4790 | 5110 | 5400 |



| CATEGORY                   | A               | B   | C               | D |
|----------------------------|-----------------|---|-----------------|---|
| S-I ILS CAT I (4.4% MAP) ‡ | 2170 (301) 0.8  | 750 RVR (VIS 0.8 550 RVR WITH ACTUAL QNH) |                 |   |
| S-I ILS CAT I (2.5% MAP)   | 2420 (551) 2.2  | (VIS 1.6 WITH ACTUAL QNH)                 |                 |   |
| S-I LOC                    | 2700 (831-3.9)  |   |                 |   |
| CIRCLING *                 | 3350 (1464-2.4) | 3580 (1694-4.0)                           | 3720 (1834-5.0) |   |
| ALTERNATE                  | (1964-4.4)      | (2194-6.0)                                | (2334-7.0)      |   |

- NOTES**
- ‡ 1. MAX IAS: HLDG AT MOMBI 5600ft: 170KT. 6000ft: 210KT.
  - \* 2. NO CIRCLING BEYOND 4NM WEST OF RWY 17/35.
  - ‡ 3. MIN MAP GRAD TO 3200ft, THEN 2.5%.
  - 4. COLOUR: SEE SPEC NOTICES.

Changes: VISIBILITY.

SCBII02-178