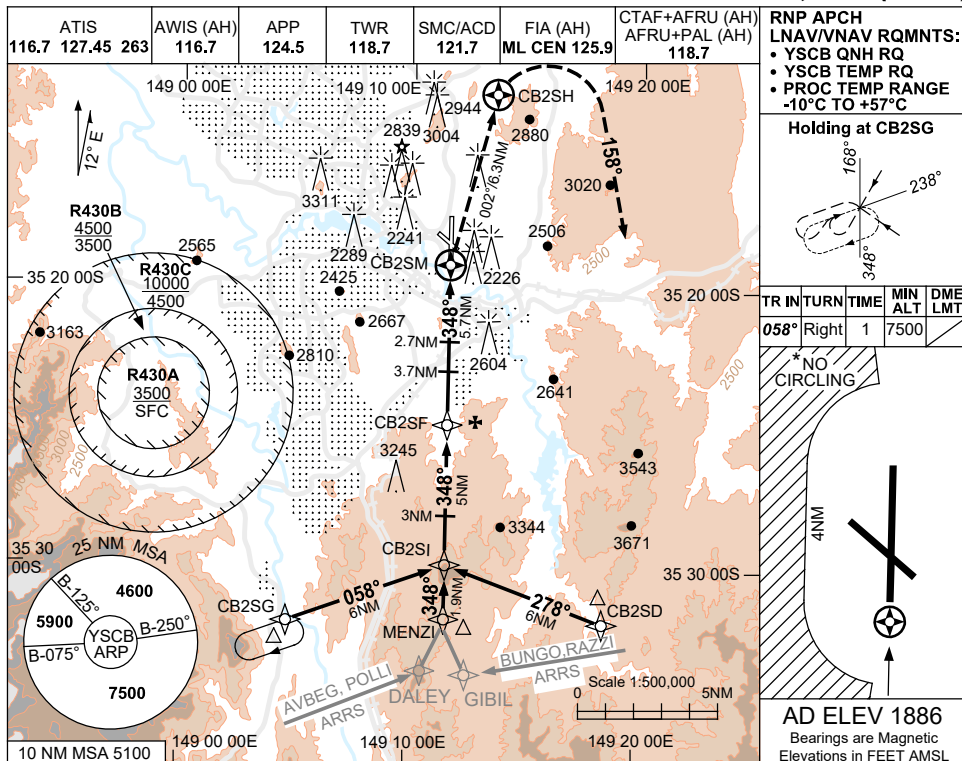


USE QNH

RNP Z RWY 35

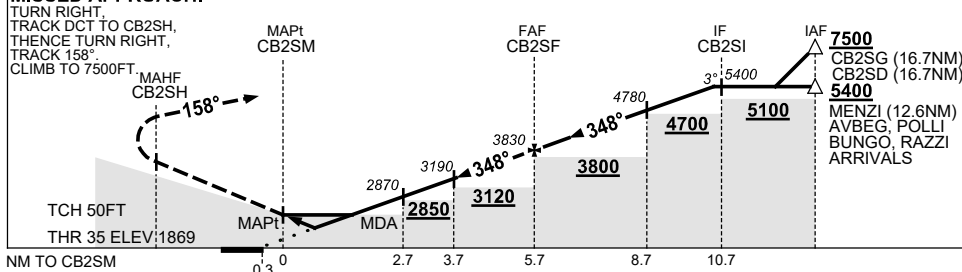
30 NOV 2023

CANBERRA, ACT (YSCB)



NM TO NEXT WPT	CB2SM	1.3	1.9	2.7	3.7	4	5	CB2SF	1	2	3	4	4.9
ALT (3° APCH PATH)		2440	2620	2870	3190	3290	3600	3830	4150	4460	4780	5100	5400

MISSED APPROACH:



NOTES

CATEGORY	A	B	C	D
LNAV/VNAV		2440 (571-2.3)		
LNAV		2620 (751-3.4)		
CIRCLING *	3350 (1464-2.4)		3580 (1694-4.0)	3720 (1834-5.0)
ALTERNATE	(1964-4.4)		(2194-6.0)	(2334-7.0)

1. MAX IAS:
 INITIAL : 210KT,
 MAP TURN: 200KT.
 * 2. NO CIRCLING
 BEYOND 4NM WEST
 OF RWY 17/35.
 3. COLOUR: SEE
 SPEC NOTICES.

Changes: WPT NAMING CONVENTION, NEW LOGO, Editorial.

SCBGN02-177