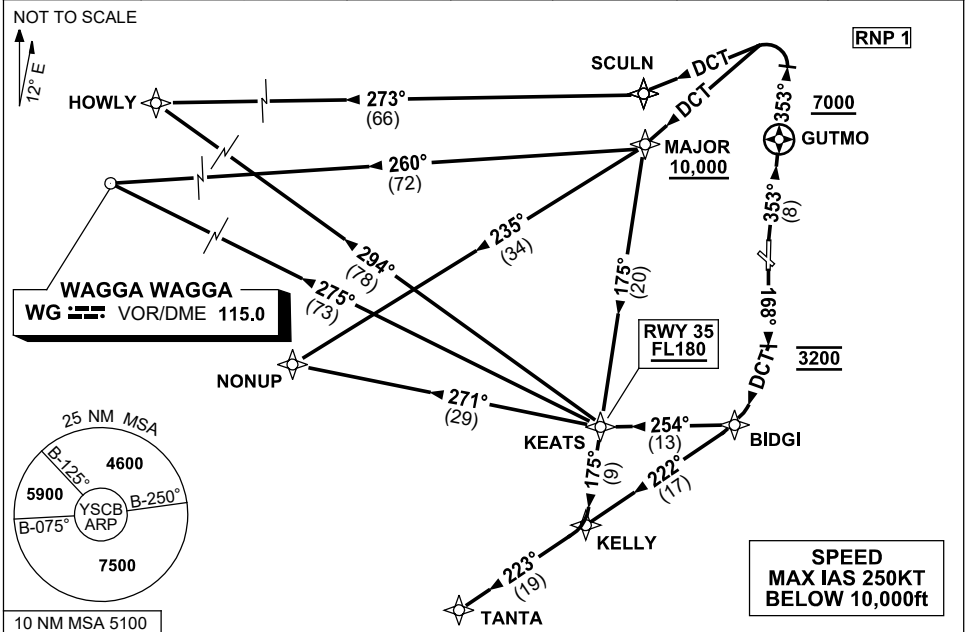


**STANDARD INSTRUMENT DEPARTURES (SID)  
RWY 17/35 SOUTH & WEST (JET) (RNAV)  
CANBERRA, ACT (YSCB)**

**30 NOV 2023**

ATIS 116.7 127.45 263	AWIS (AH) 116.7	SMC/ACD 121.7	TWR 118.7	DEP 125.9	FIA (AH) ML CEN 125.9	CTAF+AFRU (AH) AFRU+PAL (AH) 118.7	BRG are MAG ELEV in FT AMSL
--------------------------	--------------------	------------------	--------------	--------------	--------------------------	--	--------------------------------



<b>HOWLY</b>	<b>NINE</b>	<b>DEPARTURE (RNAV)</b>
<b>WAGGA (WG)</b>	<b>TWO</b>	<b>DEPARTURE (RNAV)</b>
<b>NONUP</b>	<b>NINE</b>	<b>DEPARTURE (RNAV)</b>
<b>TANTA</b>	<b>THREE</b>	<b>DEPARTURE (RNAV)</b>

**RWY 35**

- GRAD 6.8% to 3400ft thence 3.3%
- NOT BEFORE DER turn RIGHT
- Track 353° to GUTMO, thence 353°
- After passing GUTMO AND 7000ft, turn LEFT

**For HOWLY**

- Track DCT to SCULN
- Track 273° to HOWLY, thence as cleared

**For WG VOR**

- Track DCT to MAJOR
- **Cross MAJOR AT or ABV 10,000ft**
- Track 260° to WG VOR, thence as cleared

**For NONUP**

- Track DCT to MAJOR
- **Cross MAJOR AT or ABV 10,000ft**
- Track 235° to NONUP, thence as cleared

**For TANTA**

- Track DCT to MAJOR
- **Cross MAJOR AT or ABV 10,000ft**
- Turn LEFT, track 175° to KEATS
- **Cross KEATS AT or ABV FL180**
- Track 175° to KELLY
- Turn RIGHT, track 223° to TANTA, thence as cleared

**RWY 17**

- GRAD 4.9% to 4800ft thence 3.3%
- Track 168°
- AT 3200ft turn RIGHT, track DCT to BIDGI (approx 180°)

**For HOWLY**

- At BIDGI turn RIGHT, track 254° to KEATS
- At KEATS turn RIGHT, track 294° to HOWLY, thence as cleared

**For WG VOR**

- At BIDGI turn RIGHT, track 254° to KEATS
- At KEATS turn RIGHT, track 275° to WG VOR, thence as cleared

**For NONUP**

- At BIDGI turn RIGHT, track 254° to KEATS
- At KEATS turn RIGHT, track 271° to NONUP, thence as cleared

**For TANTA**

- Turn RIGHT, track 222° to KELLY,
- Track 223° to TANTA, thence as cleared

Changes: RWY 35 GRAD, MAG TRACK, Editorial.

SCBDP06-177