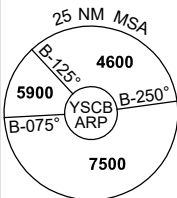


**STANDARD INSTRUMENT DEPARTURES (SID)  
RWY 17/35 NORTH (JET) (RNAV)  
CANBERRA, ACT (YSCB)**

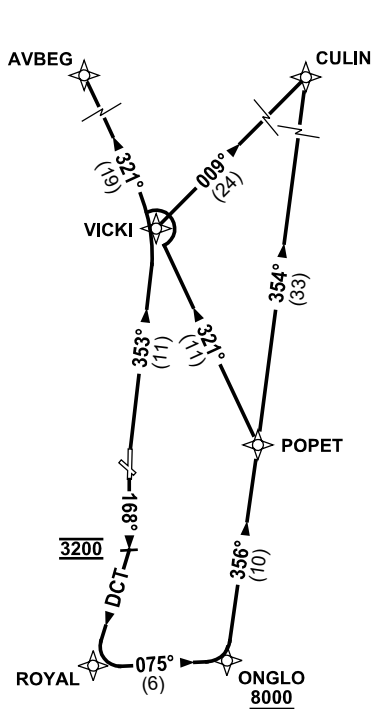
21 MAR 2024

ATIS 116.7 127.45 263	AWIS (AH) 116.7	SMC/ACD 121.7	TWR 118.7	DEP RWY 17 124.5 DEP RWY 35 CULIN 124.5 DEP RWY 35 AVBEG 125.9	FIA (AH) ML CEN 125.9	CTAF+AFRU (AH) AFRU+PAL (AH) 118.7	BRG are MAG ELEV in FT AMSL
--------------------------	--------------------	------------------	--------------	---	--------------------------	--	--------------------------------

NOT TO SCALE



10 NM MSA 5100



**SPEED  
MAX IAS 250KT  
BELOW 10,000ft**

**RNP 1**

**AVBEG THREE DEPARTURE (RNAV)  
CULIN TWO DEPARTURE (RNAV)**

**RWY 35**

- GRAD 6.8% to 3400ft thence 3.3%
- NOT BEFORE DER turn RIGHT
- Track 353° to VICKI

From VICKI

For AVBEG

- Turn LEFT, track 321° to AVBEG thence as cleared

For CULIN

- Turn RIGHT, track 009° to CULIN, thence as cleared

**RWY 17**

- GRAD 4.9% to 4800ft thence 3.3%
- Track 168°
- AT 3200ft turn RIGHT
- Track DCT to ROYAL (approx 180°)
- Turn LEFT, track 075° to ONGLO
- **Cross** ONGLO AT or ABV 8000ft
- Turn LEFT, track 356° to POPET

From POPET

For AVBEG

- Turn LEFT, track 321° to AVBEG, thence as cleared

For CULIN

- Turn LEFT, track 354° to CULIN, thence as cleared