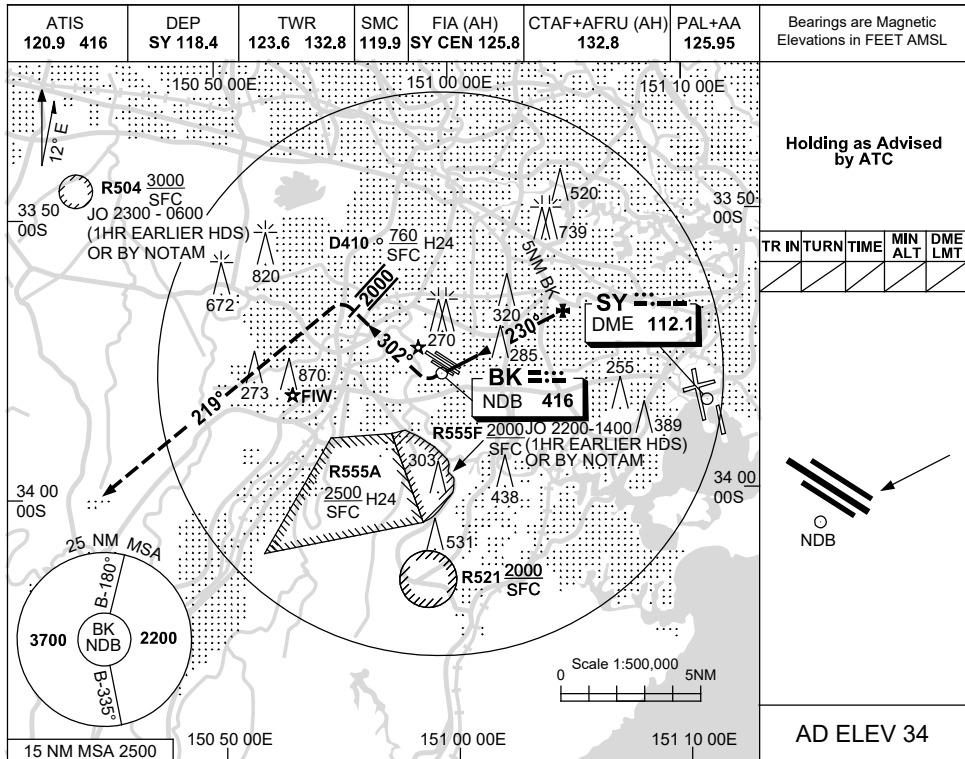


USE QNH

NDB-A

21 MAR 2024

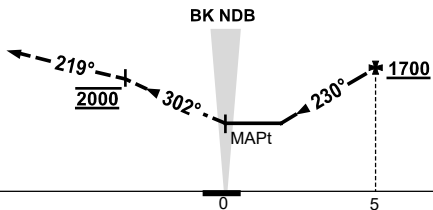
SYDNEY/BANKSTOWN, NSW (YSBK)



DME DIST		NOT APPLICABLE				
ALT						

MISSED APPROACH:

TURN RIGHT,
TRACK 302°
CLIMB TO 2000ft.
AT 2000FT TURN LEFT,
TRACK 219°
CLIMB TO 3000ft OR
AS DIRECTED BY ATC.



NM TO NDB

NOTES

1. ACFT WILL BE RADAR VECTORED TO INTERCEPT FINAL TR OUTSIDE 5NM FM BK.
2. WHEN ESTABLISHED, RADAR WILL ADVISE DESCENT CLEARANCE FM 1700FT NOT BEYOND 5NM FM BK.
3. CIRCLING BEYOND 2.5NM SW OF YSBK WILL REQUIRE A CLEARANCE INTO R555A.

CATEGORY	A	B	C	D
CIRCLING	750 (716-2.4)		940 (906-4.0)	NOT APPLICABLE
ALTERNATE	(1216-4.4)		(1406-6.0)	

Changes: R555F AMD, Editorial.

SBKNB01-178

