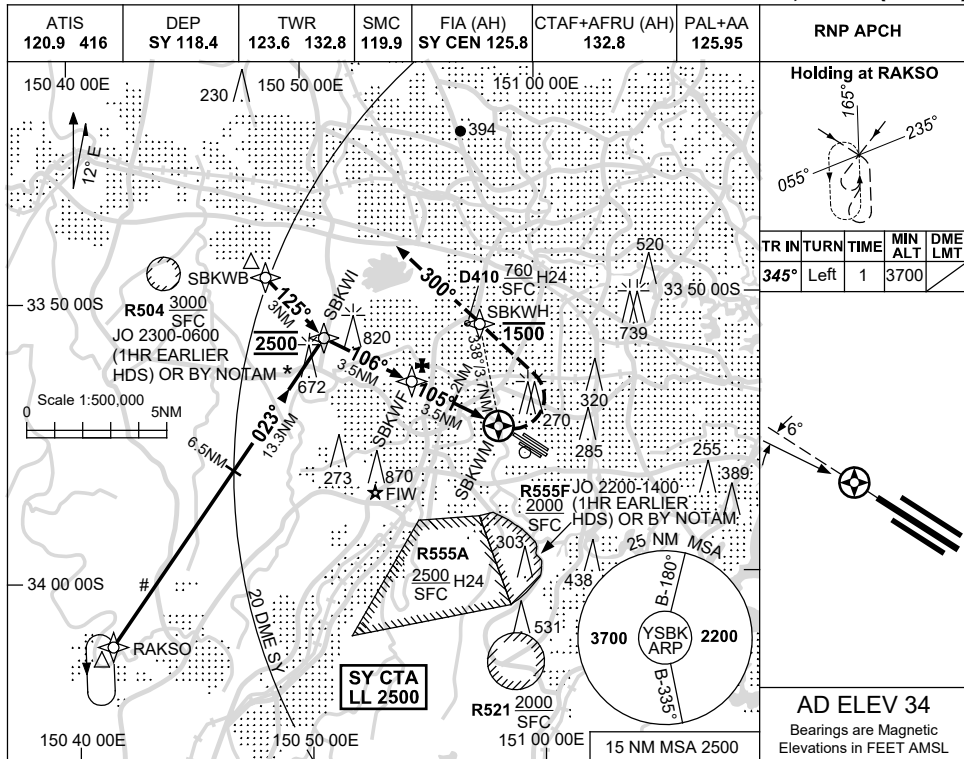


USE QNH

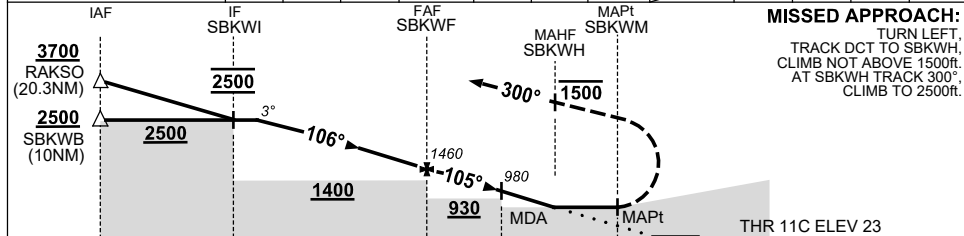
RNP RWY 11C

21 MAR 2024

SYDNEY/BANKSTOWN, NSW (YSBK)



NM TO NEXT WPT	3.3	2	1	SBKWF	3	2	1.1	SBKWM				
ALT (3° APCH PATH)	2500	2090	1780	1460	1300	980	680					



NOTES

1. MAX IAS:
HOLDING: 150KT.
INITIAL : 180KT.
MAP TURN: 160KT.
2. CIRCLING BEYOND 2.5NM SW OF YSBK WILL REQUIRE A CLEARANCE INTO R555A.
3. INITIAL SEGMENT COINCIDENT WITH WESTMEAD HOSP RNP 052 APPROACH.
4. APCH APPROVAL RQ FM SY ATIS. ALL ACFT TO TRACK VIA RAKSO UNLESS ADVISED BY ATC.

CATEGORY	A	B	C	D
LNAV	680 (657-3.7)			NOT APPLICABLE
CIRCLING	750 (716-2.4)		940(906-4.0)	
ALTERNATE	(1216-4.4)		(1406-6.0)	

Changes: R555F AMD, Editorial.

SBKGN01-178

