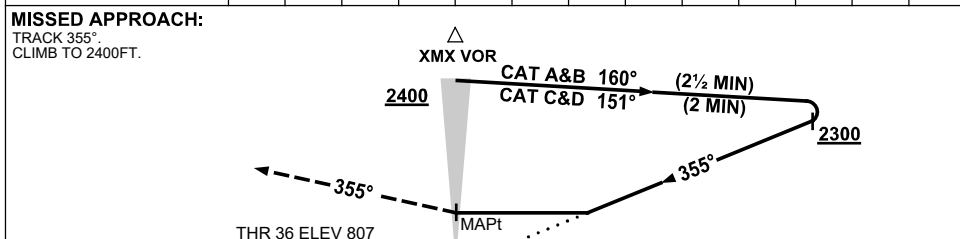
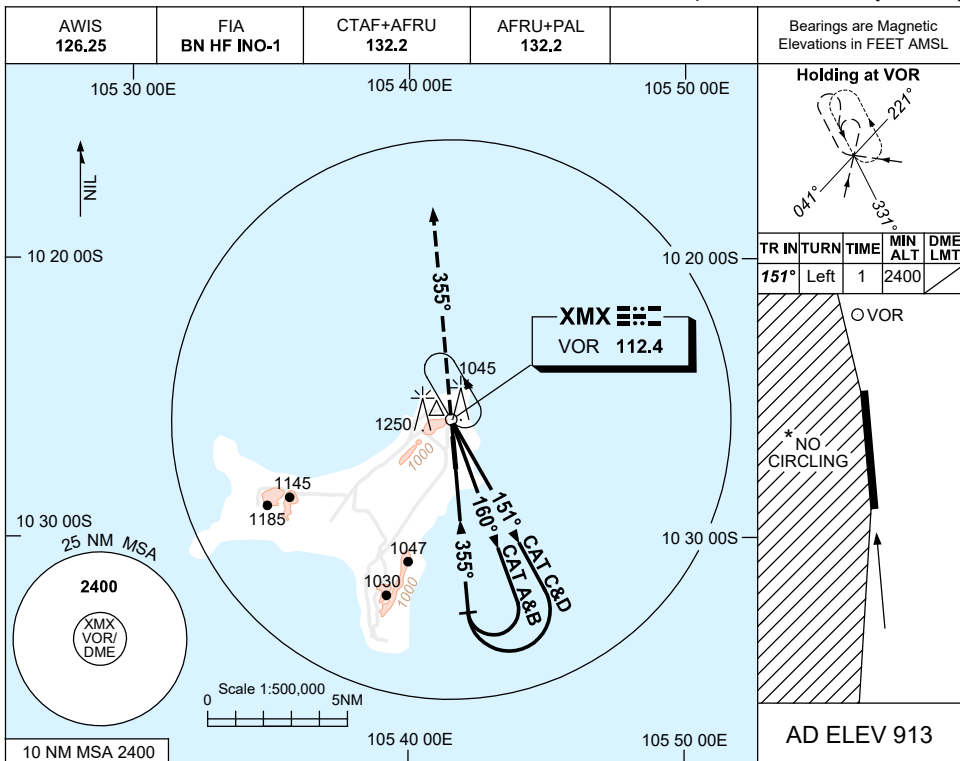


USE QNH VOR-Y RWY 36
CHRISTMAS ISLAND, AUSTRALIA (YPXM)

16 JUN 2022



NOTES

CATEGORY	A	B	C	D
S-I VOR	1590 (783-4.5)			
CIRCLING *	1650 (737-2.4)	1750 (837-4.0)	1750 (837-5.0)	
ALTERNATE	(1237-4.4)	(1337-6.0)	(1337-7.0)	

1. MAX IAS:
 INITIAL :
 CAT A&B 140KT.
 CAT C&D 210KT.

* 2. NO CIRCLING WEST OF RWY 18/36.

3. COLOUR: SEE SPEC NOTICES.

Changes: AFRU+PAL. PXMV002-171