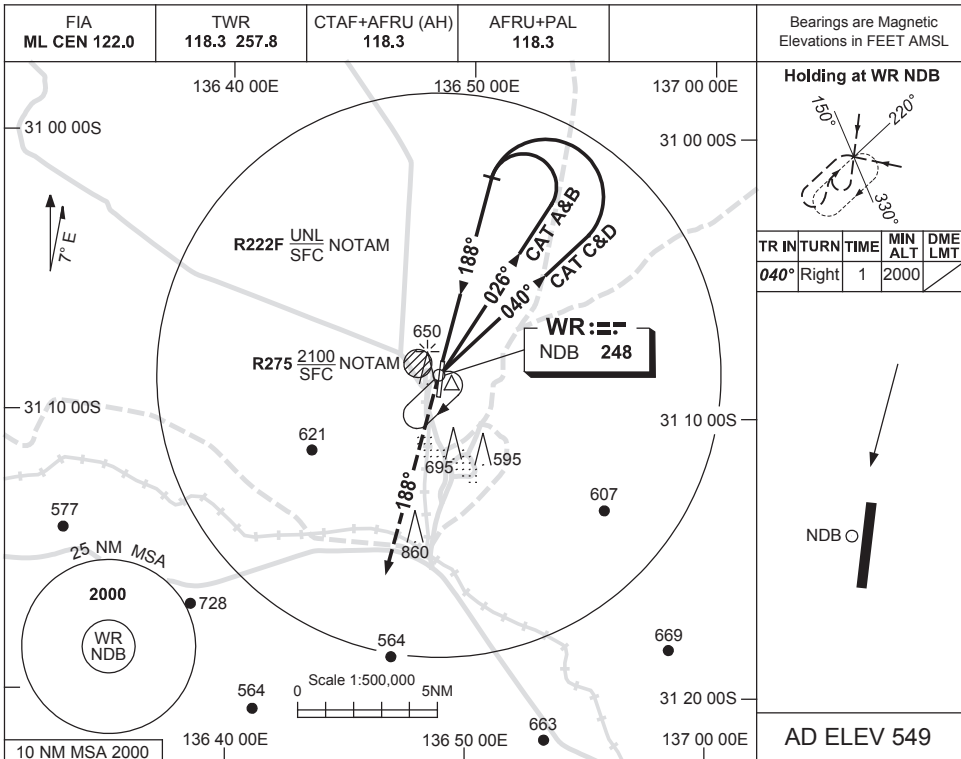


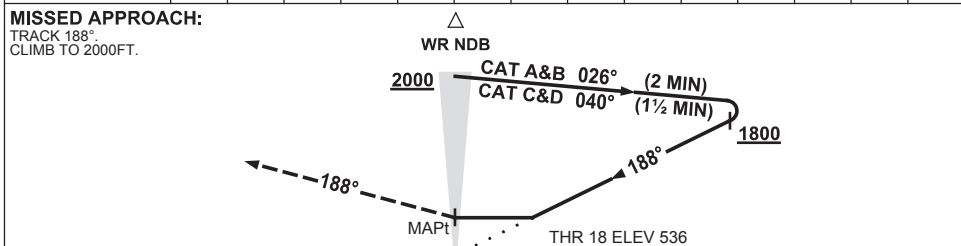
USE QNH

NDB RWY 18  
**WOOMERA, SA (YPWR)**

25 MAR 2021



DME DIST	NOT APPLICABLE									
ALT										



**NOTES**

CATEGORY	A	B	C	D
S-I NDB	<b>1150 (614-3.5)</b>			
CIRCLING	<b>1190 (641-2.4)</b>		<b>1290 (741-4.0)</b>	<b>1340 (791-5.0)</b>
ALTERNATE	(1141-4.4)		(1241-6.0)	(1291-7.0)

1. MAX IAS:  
INITIAL : 210KT.
2. AWIS (PHONE)  
08 8150 3820
3. PROC NOT AVBL  
WHEN R275 ACTIVE

Changes: S-I NDB MDH, REPLACED 673FT WITH 695FT OBST, Editorial.

PWRNB01-166