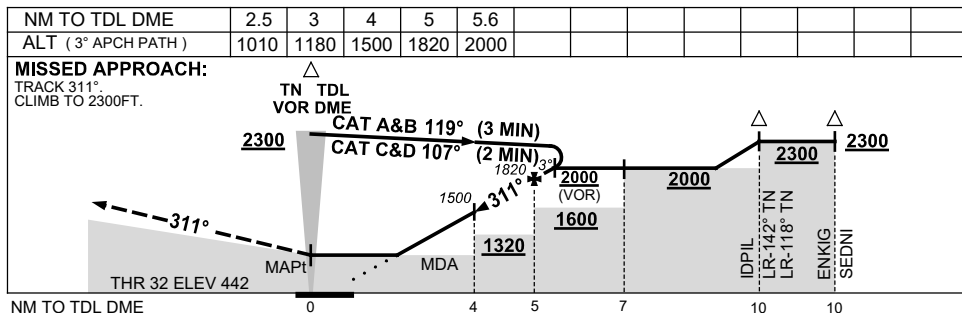
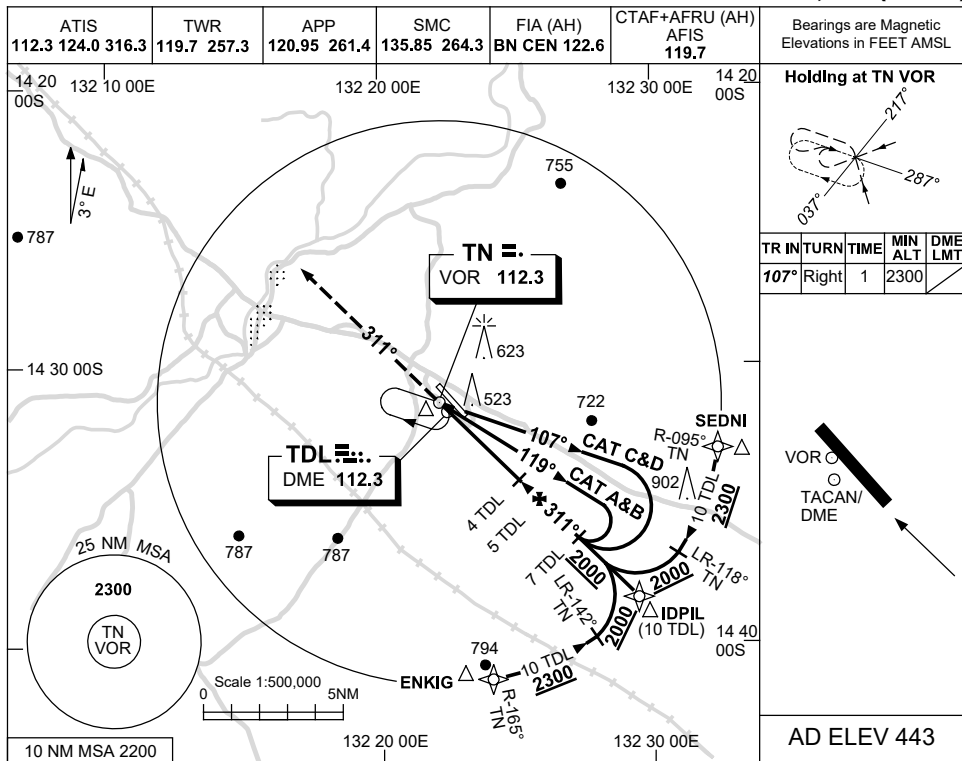


USE QNH

VOR RWY 32
TINDAL, NT (YPTN)

30 NOV 2023



NOTES

1. MAX IAS:
INITIAL : 210KT.

CATEGORY	A	B	C	D
S-I VOR/DME		1010 (567-3.2)		
S-I VOR		1250 (807-4.6)		
CIRCLING	1260 (817-2.4)		1290 (847-4.0)	1350 (907-5.0)
ALTERNATE	(1317-4.4)		(1347-6.0)	(1407-7.0)

Changes: AFIS, Editorial.

PTNVO02-177