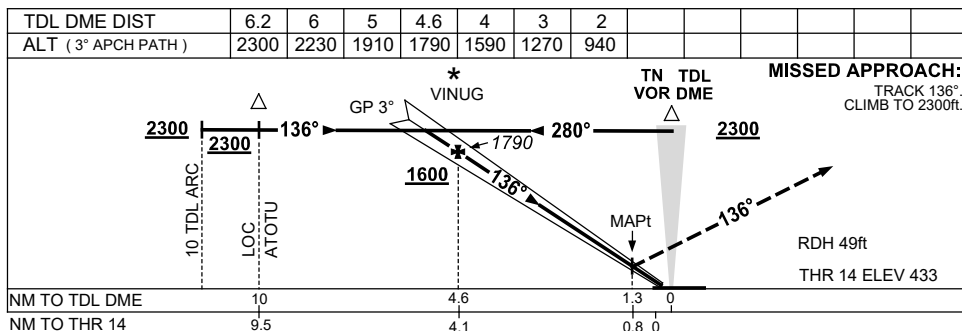
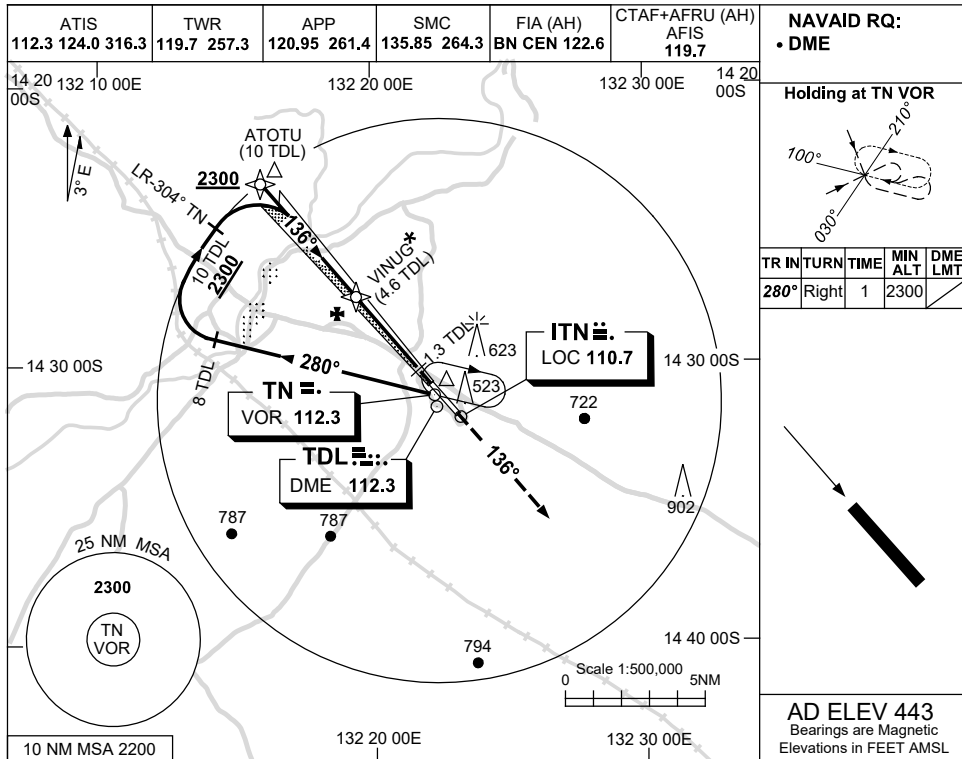


USE QNH

LOC-Z RWY 14
TINDAL, NT (YPTN)

21 MAR 2024



NOTES

*1. ACFT MAY BE RADAR VECTORED TO FAF.

CATEGORY	A	B	C	D
S-I LOC/DME	940 (507-2.0)			
CIRCLING	1260 (817-2.4)	1290 (847-4.0)	1350 (907-5.0)	
ALTERNATE	(1317-4.4)	(1347-6.0)	(1407-7.0)	

Changes: S-I LOC/DME VISIBILITY.

PNTLZ01-178