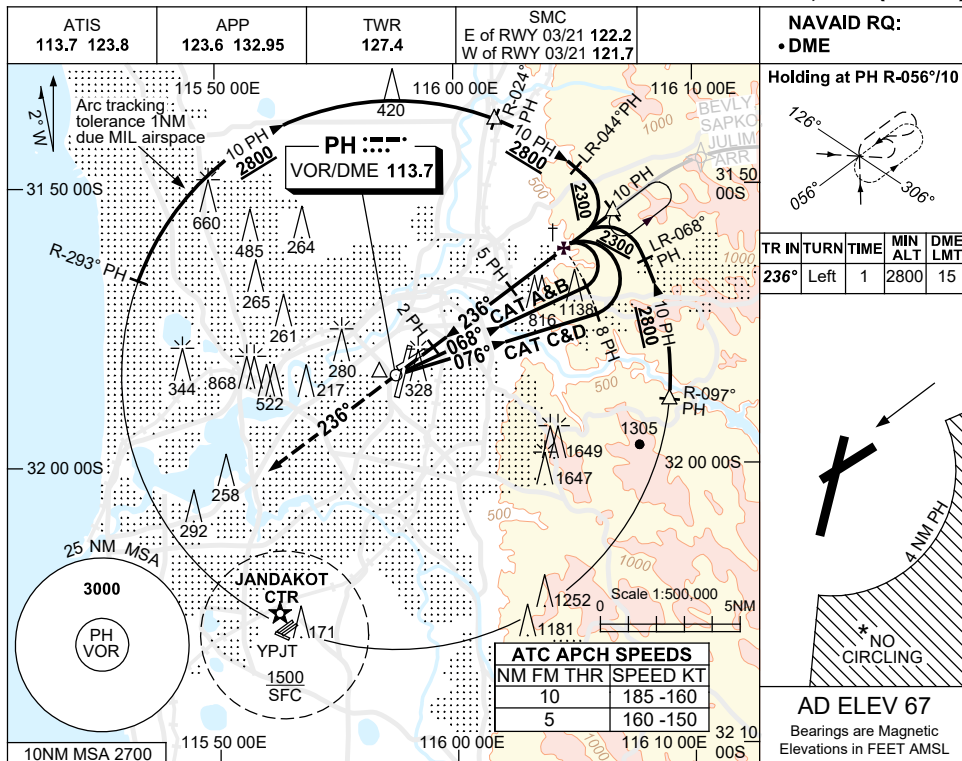


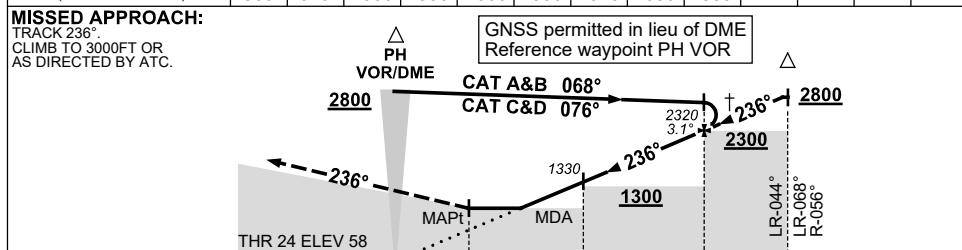
USE QNH

VOR RWY 24  
PERTH, WA (YPPH)

30 NOV 2023



NM TO PH DME	2.7	3	4	5	6	7	8	9	9.5				
ALT( 3.1°APCH PATH )	560	670	1000	1330	1660	1990	2320	2650	2800				



NM TO PH DME	0	2	5	8	10
--------------	---	---	---	---	----

**NOTES**

- \* 1. NO CIRCLING CAT C&D  
ACFT BEYOND 4NM  
PH E OF RWY 03/21  
AND 06/24.
- † 2. ACFT MAY BE RADAR  
VECTORED TO FNA.
- \* 3. SPECIAL ALTN MNM  
NOT APPLICABLE.
- 4. COLOUR: SEE  
SPEC NOTICES.

CATEGORY	A	B	C	D
S-I VOR/DME	<b>560 (502-1.9)</b>			
CIRCLING *	<b>760 (693-2.4)</b>	<b>1440 (1373-4.0)</b>	<b>1440 (1373-5.0)</b>	
ALTERNATE *	<b>(1193-4.4)</b>	<b>(1873-6.0)</b>	<b>(1873-7.0)</b>	

Changes: SAPKO REPLACES CONNI, Editorial.

PPHVO04-177