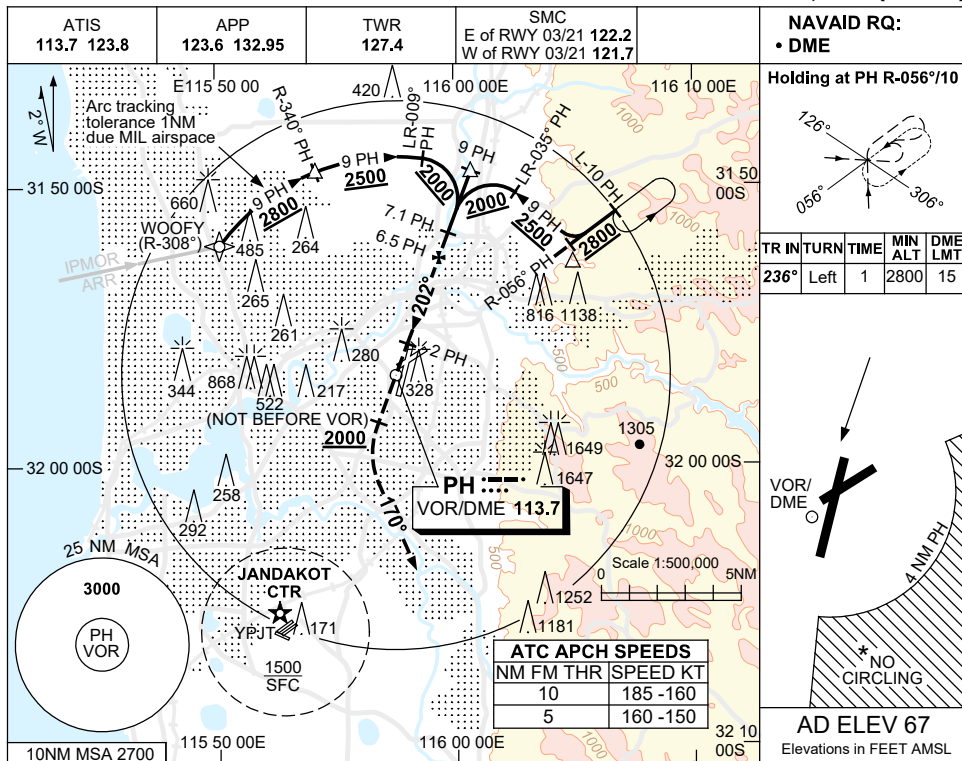


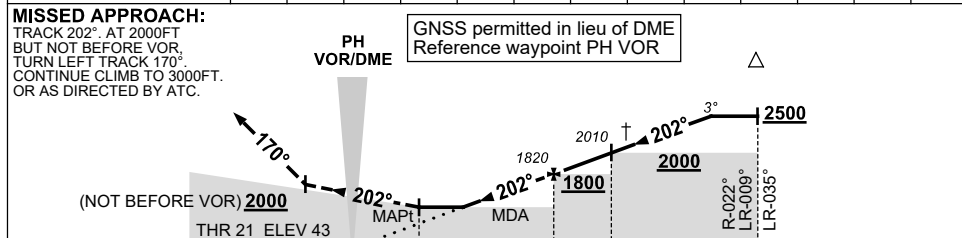
USE QNH

VOR RWY 21
PERTH, WA (YPPH)

30 NOV 2023



NM TO PH DME	2.5	3	4	5	6	7.1	8	8.6				
ALT (3° APCH PATH)	550	710	1020	1340	1660	2010	2290	2500				



NM TO PH DME

CATEGORY	A	B	C	D
S-I VOR/DME	550 (507-2.9)			
CIRCLING *	760 (693-2.4)		1440 (1373-4.0) 1440 (1373-5.0)	
ALTERNATE ‡	(1193-4.4)		(1873-6.0) (1873-7.0)	

- NOTES**
- * 1. NO CIRCLING CAT C&D ACFT BEYOND 4NM PH E OF RWY 03/21 AND RWY 06/24.
 - † 2. ACFT MAY BE RADAR VECTORED TO FNA.
 - * 3. SPECIAL ALTN MNM NOT APPLICABLE.
 - 4. COLOUR: SEE SPEC NOTICES.

Changes: IPMOR REPLACES WAVES, Editorial. PPHV003-177