

**STANDARD INSTRUMENT ARRIVAL (STAR)
SAPKO ONE ALPHA ARRIVALS (NON-JET) (RNAV) RWY 21/24
PERTH, WA (YPPH)**

30 NOV 2023

ATIS 113.7 123.8	APP 123.6 132.95	TWR 127.4	SMC E of RWY 03/21 122.2 W of RWY 03/21 121.7	Bearings are Magnetic Elevations in FEET AMSL
---------------------	---------------------	--------------	---	--

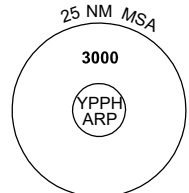
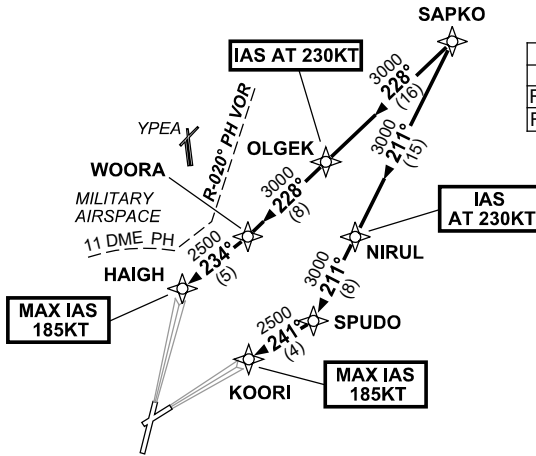
NOT TO SCALE



**SPEED
MAX IAS 250KT
BELOW 10,000ft**

RNP1

ATC APCH SPEEDS	
NM FM TD	SPEED KT
RWY 21 HAIGH	185 -160
RWY 24 KOORI	185 -160



ARRIVAL: SAPKO ONE

RWY 21 ALPHA:

- From SAPKO, track 228° to OLGEK, **IAS AT 230KT** from OLGEK,
- Track 228° to WOORA,
- Turn RIGHT, track 234° to HAIGH, for ILS, RNP or LOC RWY 21 APPROACH.
MAX IAS 185KT from HAIGH.

RWY 24 ALPHA:

- From SAPKO, track 211° to NIRUL, **IAS AT 230KT** from NIRUL,
- Track 211° to SPUDO,
- Turn RIGHT, track 241° to KOORI, for ILS, RNP or LOC RWY 24 APPROACH.
MAX IAS 185KT from KOORI.

COMMUNICATIONS FAILURE: PROCEDURE IN IMC

Squawk 7600, comply with vertical navigation requirements, but not below MSA. Track via the latest STAR clearance to the nominated runway, then fly the most suitable approach in accordance with ERSA EMERG Section 1.5.

Changes: SAPKO REPLACES CONNI, VALIDITY NUMBER, Editorial.

PPHSR25-177