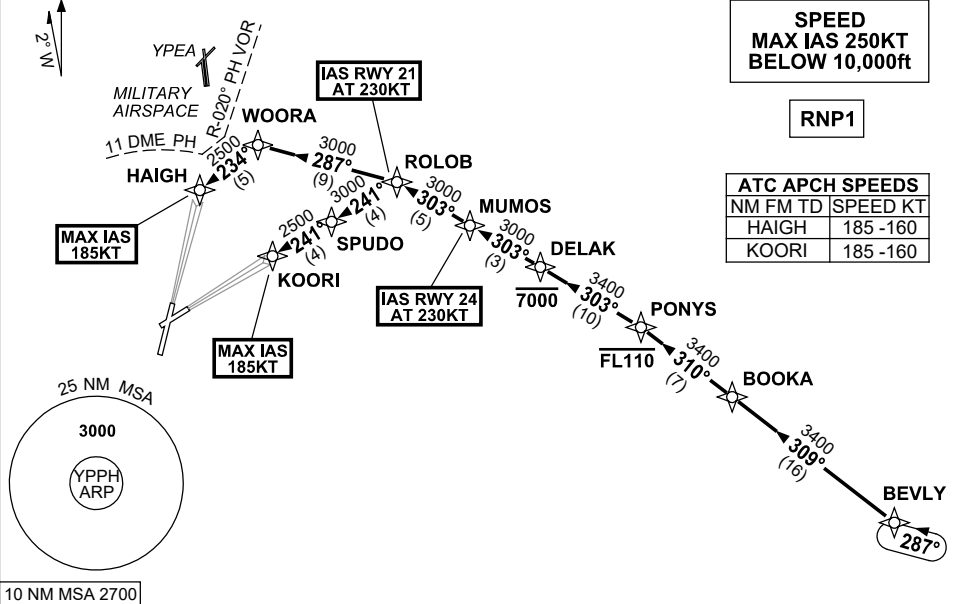


**STANDARD INSTRUMENT ARRIVAL (STAR)  
BEVLY FIVE ALPHA ARRIVALS (JET) (RNAV) RWY 21/24  
PERTH, WA (YPPH)**

**7 SEP 2023**

ATIS 113.7 123.8	APP 123.6	TWR 127.4	SMC E of RWY 03/21 122.2 W of RWY 03/21 121.7	Bearings are Magnetic Elevations in FEET AMSL
---------------------	--------------	--------------	---	--

NOT TO SCALE



**ARRIVAL: BEVLY FIVE**

**RWY 21 ALPHA:**

- From BEVLY, track 309° to BOOKA
- Track 310° to PONYS  
**Cross** PONYS AT or BLW FL110
- Turn LEFT, track 303° to DELAK  
**Cross** DELAK AT or BLW 7000ft
- Track 303° to MUMOS
- Track 303° to ROLOB  
**IAS AT 230KT** from ROLOB
- Turn LEFT, track 287° to WOORA
- Turn LEFT, track 234° to HAIGH  
for ILS, RNP or  
LOC RWY 21 APPROACH  
MAX IAS 185KT from HAIGH

**RWY 24 ALPHA:**

- From BEVLY, track 309° to BOOKA
- Track 310° to PONYS  
**Cross** PONYS AT or BLW FL110
- Turn LEFT, track 303° to DELAK  
**Cross** DELAK AT or BLW 7000ft
- Track 303° to MUMOS  
**IAS AT 230KT** from MUMOS
- Track 303° to ROLOB
- Turn LEFT, track 241° to SPUDO
- Track 241° to KOORI  
for ILS, RNP or  
LOC RWY 24 APPROACH  
MAX IAS 185KT from KOORI

**COMMUNICATIONS FAILURE: PROCEDURE IN IMC**

- Squawk 7600, comply with vertical navigation requirements, but not below MSA.
- Track via the latest STAR clearance to the nominated runway, then fly the most suitable approach in accordance with ERSA EMERG Section 1.5.

Changes: Editorial.

PPHSR23-176