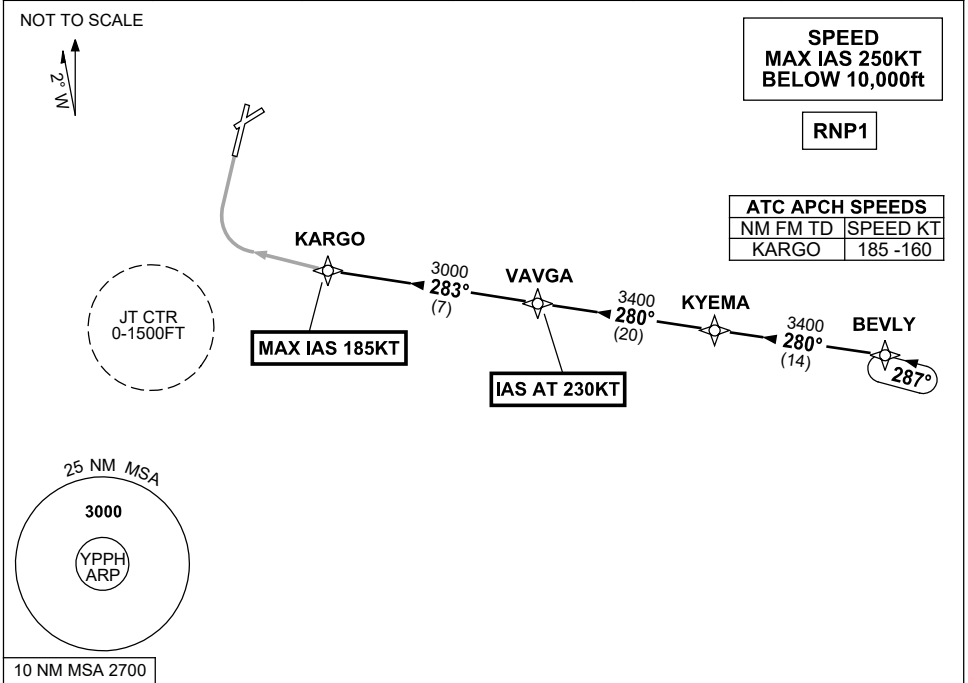


**STANDARD INSTRUMENT ARRIVAL (STAR)  
BEVLY FIVE X-RAY ARRIVAL (JET) (RNAV)  
PERTH, WA (YPPH)**

**7 SEP 2023**

ATIS 113.7 123.8	APP 123.6	TWR 127.4	SMC E of RWY 03/21 122.2 W of RWY 03/21 121.7	Bearings are Magnetic Elevations in FEET AMSL
---------------------	--------------	--------------	---	--



**ARRIVAL:** **BEVLY FIVE**

- From BEVLY, track 280° to KYEMA,
- Track 280° to VAVGA,  
**IAS AT 230KT** from VAVGA,
- Turn RIGHT, track 283° to KARGO,  
**MAX IAS 185KT** from KARGO.

**RWY 03 X-RAY:** • From KARGO track via RNP X RWY 03 (AR).

**COMMUNICATIONS FAILURE: PROCEDURE IN IMC**

- Squawk 7600, comply with vertical navigation requirements, but not below MSA.
- Track via the latest STAR clearance to the nominated runway, then fly the most suitable approach in accordance with ERSA EMERG Section 1.5.

Changes: Editorial. PPHSR22-176