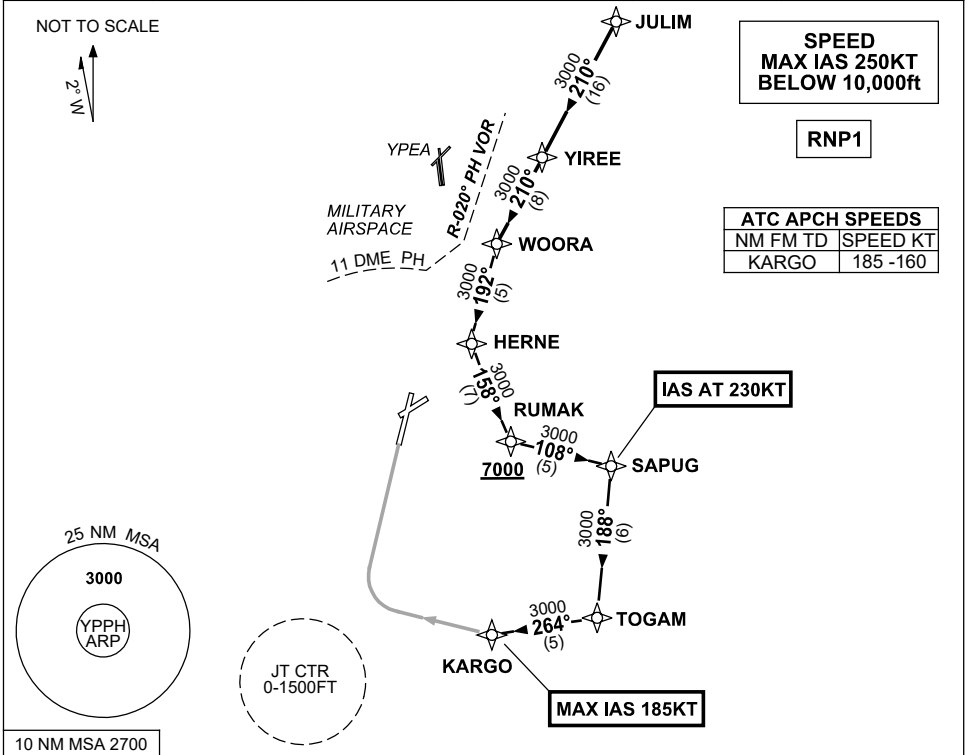


**STANDARD INSTRUMENT ARRIVAL (STAR)
JULIM FIVE X-RAY ARRIVAL(JET) (RNAV)
PERTH, WA (YPPH)**

21 MAR 2024

ATIS 113.7 123.8	APP 123.6 132.95	TWR 127.4	SMC E of RWY 03/21 122.2 W of RWY 03/21 121.7	Bearings are Magnetic Elevations in FEET AMSL
---------------------	---------------------	--------------	---	--



ATC APCH SPEEDS		
NM	FM	TD
KARGO		185 -160

IAS AT 230KT

MAX IAS 185KT

ARRIVAL:

JULIM FIVE

- From JULIM track 210° to YIREE,
- Track 210° to WOORA,
- Turn LEFT, track 192° to HERNE,
- Turn LEFT, track 158° to RUMAK,
 Cross RUMAK AT or ABV 7000ft,
- Turn LEFT, track 108° to SAPUG
 IAS AT 230KT from SAPUG
- Turn RIGHT, track 188° to TOGAM
- Turn RIGHT, track 264° to KARGO,
 MAX IAS 185KT from KARGO.

RWY 03 X-RAY:

- From KARGO turn RIGHT, track via RNP X RWY 03 (AR).

COMMUNICATIONS FAILURE: PROCEDURE IN IMC

- Squawk 7600, comply with vertical navigation requirements, but not below MSA.
- Track via the latest STAR clearance to the nominated runway, then fly the most suitable approach in accordance with ERS A EMERG Section 1.5.

Changes: Editorial.

PPHSR20-178