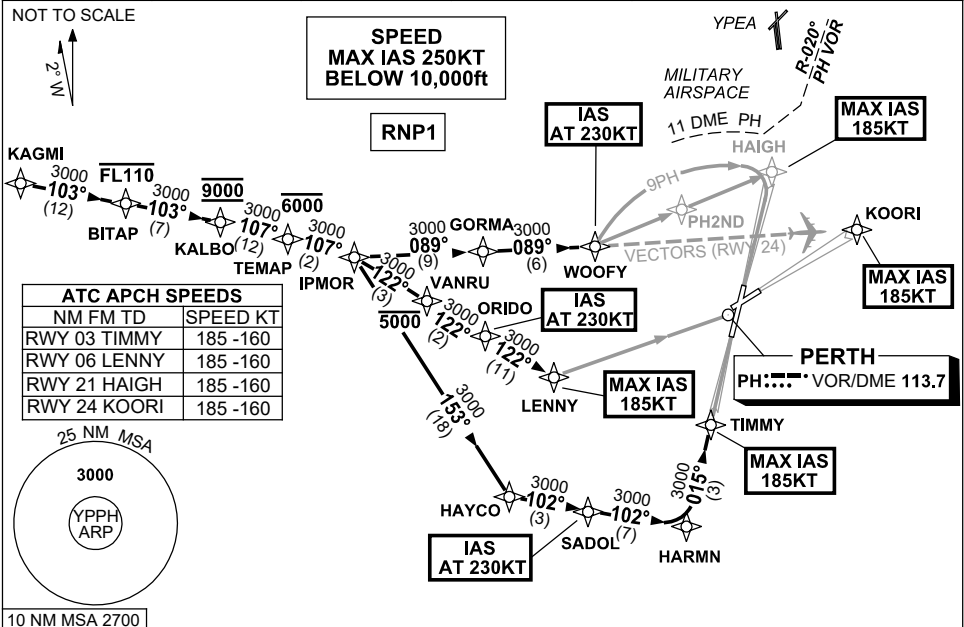


**STANDARD INSTRUMENT ARRIVAL (STAR)  
IPMOR ONE ALPHA ARRIVALS (RNAV)  
PERTH, WA (YPPH)**

**30 NOV 2023**

ATIS 113.7 123.8	APP 123.6	TWR 127.4	SMC E of RWY 03/21 122.2 W of RWY 03/21 121.7	Bearings are Magnetic Elevations in FEET AMSL
---------------------	--------------	--------------	---	--



- KAGMI TRANSITION**
- From KAGMI, track 103° to BITAP  
Cross BITAP AT or BLW FL110
  - Track 103° to KALBO  
Cross KALBO AT 9000ft
  - Turn RIGHT, track 107° to TEMAP  
Cross TEMAP AT or BLW 6000ft
  - Track 107° to IPMOR
  - Then follow ARRIVAL Instructions.

- ARRIVAL: IPMOR ONE**
- RWY 03 ALPHA:**
- Turn RIGHT, track 153° to HAYCO
  - Turn LEFT, track 102° to SADOL  
IAS AT 230KT from SADOL
  - Track 102° to HARMN
  - Turn LEFT, track 015° to TIMMY  
for ILS, RNP Z or LOC  
RWY 03 APPROACH  
MAX IAS 185KT from TIMMY
- RWY 06 ALPHA:**
- Turn RIGHT, track 122° to VANRU  
Cross VANRU AT or BLW 5000ft
  - Track 122° to ORIDO  
IAS AT 230KT from ORIDO
  - Track 122° to LENNY  
for RNP or  
VOR RWY 06 APPROACH  
MAX IAS 185KT from LENNY.
- RWY 21 ALPHA:**
- Turn LEFT, track 089° to GORMA
  - Track 089° to WOOFY  
for ILS, RNP, LOC or  
VOR RWY 21 APPROACH  
IAS AT 230KT from WOOFY  
MAX IAS 185KT from HAIGH
- RWY 24 ALPHA:**
- Turn LEFT, track 089° to GORMA
  - Track 089° to WOOFY,  
IAS AT 230KT from WOOFY
  - Expect radar vectors for ILS,  
RNP or LOC RWY 24 APPROACH  
MAX IAS 185KT from KOORI

- COMMUNICATIONS FAILURE: PROCEDURE IN IMC**
- Squawk 7600, comply with vertical navigation requirements, but not below MSA.
  - Track via the latest STAR clearance to the nominated runway, then fly the most suitable approach in accordance with ERSA EMERG Section 1.5.

Changes: WAYPOINT NAMES, CHART TITLE, Editorial. PPHSR18-177