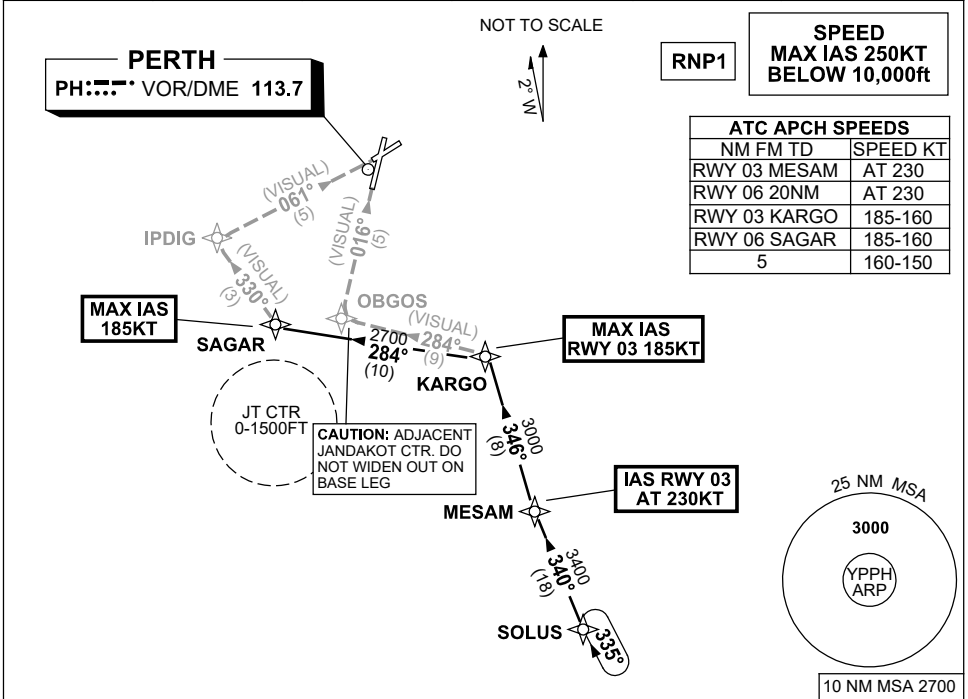


**STANDARD INSTRUMENT ARRIVAL (STAR)  
SOLUS TWO VICTOR ARRIVAL (RNAV)  
PERTH, WA (YPPH)**

24 MAR 2022

ATIS 113.7 123.8	APP 123.6	TWR 127.4	SMC E of RWY 03/21 122.2 W of RWY 03/21 121.7	Bearings are Magnetic Elevations in FEET AMSL
---------------------	--------------	--------------	---	--



**ARRIVAL:**

**SOLUS TWO**

- From SOLUS, track 340° to MESAM,  
**IAS RWY 03 AT 230KT** from MESAM,
- Turn RIGHT, track 346° to KARGO,  
**MAX IAS RWY 03 185KT** from KARGO.

**RWY 03 VICTOR:**

- From KARGO turn LEFT, track 284° VISUAL to OBGOS for VISUAL final RWY 03

**RWY 06 VICTOR:**

- From KARGO turn LEFT, track 284° to SAGAR  
**MAX IAS 185KT** from SAGAR
- Turn RIGHT, track 330° VISUAL to IPDIG for VISUAL final RWY 06

**COMMUNICATIONS FAILURE: PROCEDURE IN IMC**

- Squawk 7600, comply with vertical navigation requirements, but not below MSA.
- Track via the latest STAR clearance to the nominated runway, then fly the most suitable approach in accordance with ERSA EMERG Section 1.5.

Changes: Editorial.

PPHSR13-170