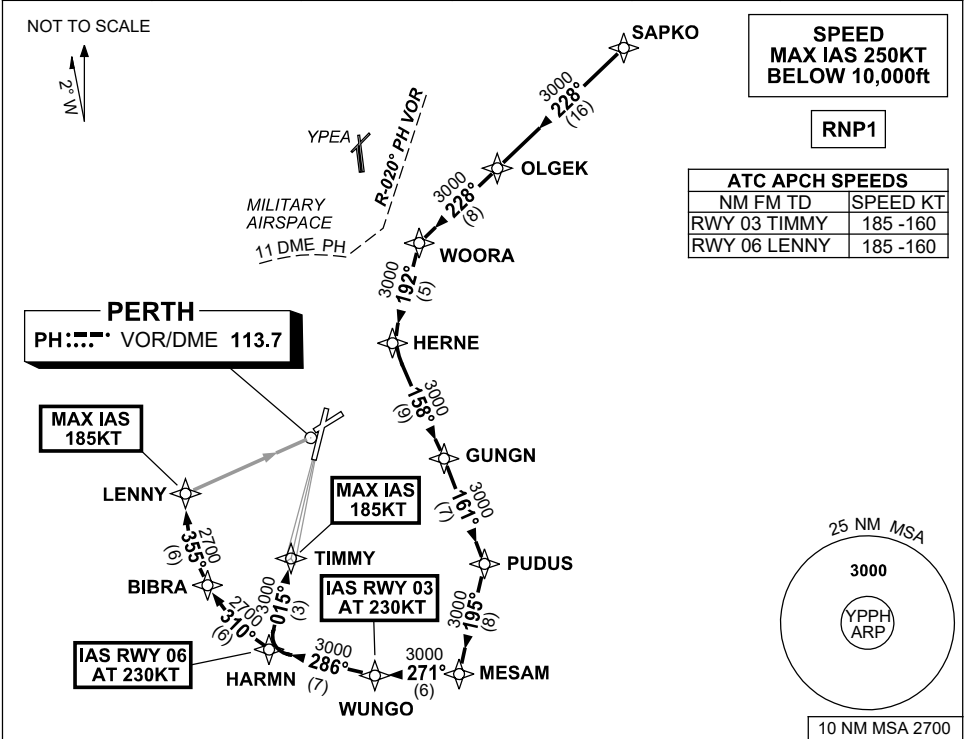


**STANDARD INSTRUMENT ARRIVAL (STAR)  
SAPKO ONE ALPHA ARRIVALS (NON-JET) (RNAV) RWY 03/06  
PERTH, WA (YPPH)**

**30 NOV 2023**

ATIS 113.7 123.8	APP 123.6 132.95	TWR 127.4	SMC E of RWY 03/21 122.2 W of RWY 03/21 121.7	Bearings are Magnetic Elevations in FEET AMSL
---------------------	---------------------	--------------	---	--



**ARRIVAL: SAPKO ONE**

**RWY 03 ALPHA:**

- From SAPKO, track 228° to OLGEK,
- Track 228° to WOORA,
- Turn LEFT, track 192° to HERNE,
- Turn LEFT, track 158° to GUNGN,
- Turn RIGHT, track 161° to PUDUS,
- Turn RIGHT, track 195° to MESAM,
- Turn RIGHT, track 271° to WUNGO,
- **IAS AT 230KT from WUNGO**
- Turn RIGHT, track 286° to HARMN,
- Turn RIGHT, track 015° to TIMMY,
- for ILS, RNP Z or LOC RWY 03 APPROACH.
- **MAX IAS 185KT from TIMMY**

**RWY 06 ALPHA:**

- From SAPKO, track 228° to OLGEK,
- Track 228° to WOORA,
- Turn LEFT, track 192° to HERNE,
- Turn LEFT, track 158° to GUNGN,
- Turn RIGHT, track 161° to PUDUS,
- Turn RIGHT, track 195° to MESAM,
- Turn RIGHT, track 271° to WUNGO,
- Turn RIGHT, track 286° to HARMN,
- **IAS AT 230KT from HARMN.**
- Turn RIGHT, track 310° to BIBRA,
- Turn RIGHT, track 355° to LENNY,
- for RNP or VOR RWY 06 APPROACH,
- **MAX IAS 185KT from LENNY.**

**COMMUNICATIONS FAILURE: PROCEDURE IN IMC**

Squawk 7600, comply with vertical navigation requirements, but not below MSA. Track via the latest STAR clearance to the nominated runway, then fly the most suitable approach in accordance with ERSA EMERG Section 1.5.