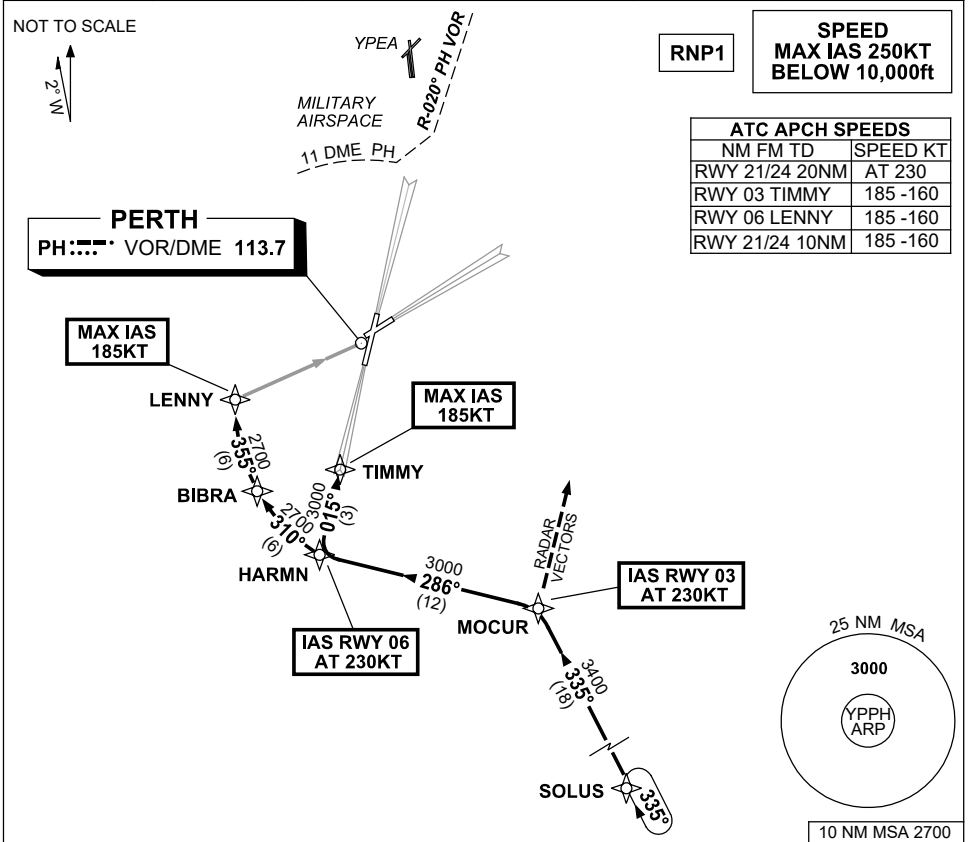


**STANDARD INSTRUMENT ARRIVAL (STAR)
SOLUS TWO ALPHA ARRIVALS (RNAV)
PERTH, WA (YPPH)**

7 SEP 2023

ATIS 113.7 123.8	APP 123.6	TWR 127.4	SMC E of RWY 03/21 122.2 W of RWY 03/21 121.7	Bearings are Magnetic Elevations in FEET AMSL
---------------------	--------------	--------------	---	--



ARRIVAL: SOLUS TWO

RWY 03 ALPHA:

- From SOLUS, track 335° to MOCUR, IAS AT 230KT from MOCUR
- Turn LEFT, track 286° to HARMN,
- Turn RIGHT, track 015° to TIMMY, for ILS, RNP Z or LOC RWY 03 APPROACH.
- MAX IAS 185KT from TIMMY

RWY 21 ALPHA:

- From SOLUS, track 335° to MOCUR, Expect radar vectors for ILS, RNP or LOC RWY 21 APPROACH.

RWY 06 ALPHA:

- From SOLUS, track 335° to MOCUR,
- Turn LEFT, track 286° to HARMN, IAS AT 230KT from HARMN
- Turn RIGHT, track 310° to BIBRA,
- Turn RIGHT, track 355° to LENNY for RNP or VOR RWY 06 APPROACH.
- MAX IAS 185KT from LENNY

RWY 24 ALPHA:

- From SOLUS, track 335° to MOCUR, Expect radar vectors for ILS, RNP or LOC-RWY 24 APPROACH.

COMMUNICATIONS FAILURE: PROCEDURE IN IMC

- Squawk 7600, comply with vertical navigation requirements, but not below MSA.
- Track via the latest STAR clearance to the nominated runway, then fly the most suitable approach in accordance with ERSA EMERG Section 1.5.

Changes: Editorial.

PPHSR10-176