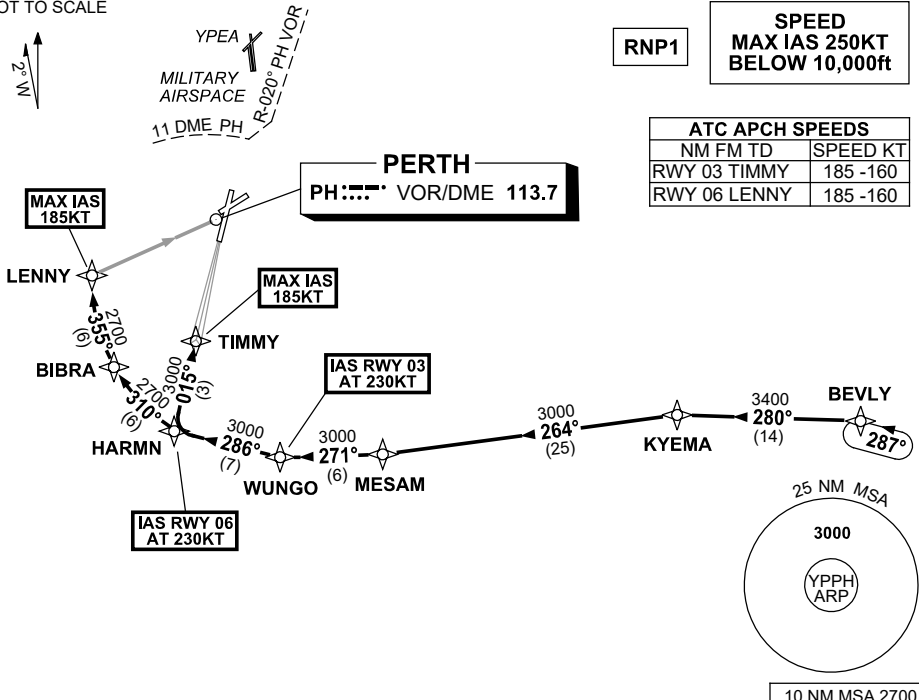


**STANDARD INSTRUMENT ARRIVAL (STAR)  
BEVLY FIVE ALPHA ARRIVALS (JET) (RNAV) RWY 03/06  
PERTH, WA (YPPH)**

7 SEP 2023

ATIS 113.7 123.8	APP 123.6	TWR 127.4	SMC E of RWY 03/21 122.2 W of RWY 03/21 121.7	Bearings are Magnetic Elevations in FEET AMSL
---------------------	--------------	--------------	---	--

NOT TO SCALE



**ARRIVAL: BEVLY FIVE**

**RWY 03 ALPHA:**

- From BEVLY, track 280° to KYEMA,
- Turn LEFT, track 264° to MESAM,
- Turn RIGHT, track 271° to WUNGO,  
**IAS AT 230KT** from WUNGO,
- Turn RIGHT, track 286° to HARMN,
- Turn RIGHT, track 015° to TIMMY  
for ILS, RNP Z or  
LOC RWY 03 APPROACH.  
MAX IAS 185KT from TIMMY,

**RWY 06 ALPHA:**

- From BEVLY, track 280° to KYEMA,
- Turn LEFT, track 264° to MESAM,
- Turn RIGHT, track 271° to WUNGO,
- Turn RIGHT, track 286° to HARMN,  
**IAS AT 230KT** from HARMN,
- Turn RIGHT, track 310° to BIBRA,
- Turn RIGHT, track 355° to LENNY  
for RNP or  
VOR RWY 06 APPROACH.  
MAX IAS 185KT from LENNY.

**COMMUNICATIONS FAILURE: PROCEDURE IN IMC**

- Squawk 7600, comply with vertical navigation requirements, but not below MSA.
- Track via the latest STAR clearance to the nominated runway, then fly the most suitable approach in accordance with ERSA EMERG Section 1.5.