

**STANDARD INSTRUMENT ARRIVAL (STAR)
GRENE FIVE X-RAY ARRIVAL (NON-JET) (RNAV)
PERTH, WA (YPPH)**

21 MAR 2024

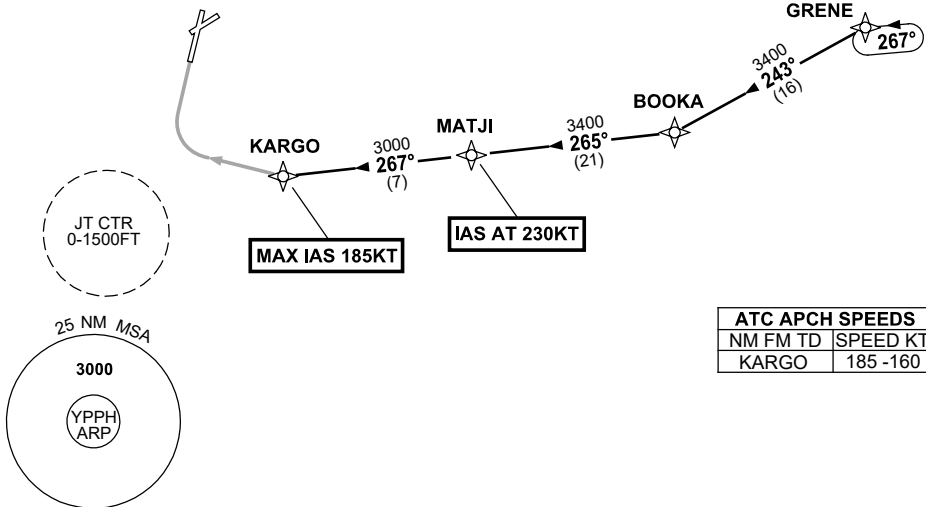
| | | | | |
|---------------------|--------------|--------------|---|--|
| ATIS 113.7 123.8 | APP 123.6 | TWR 127.4 | SMC E of RWY 03/21 122.2 W of RWY 03/21 121.7 | Bearings are Magnetic Elevations in FEET AMSL |
|---------------------|--------------|--------------|---|--|

NOT TO SCALE



**SPEED
MAX IAS 250KT
BELOW 10,000ft**

RNP1



| ATC APCH SPEEDS | |
|-----------------|----------|
| NM FM TD | SPEED KT |
| KARGO | 185 -160 |

10 NM MSA 2700

ARRIVAL: GRENE FIVE

- From GRENE, track 243° to BOOKA,
- Turn RIGHT, track 265° to MATJI,
IAS AT 230KT from MATJI,
- Turn RIGHT, track 267° to KARGO,
MAX IAS 185KT from KARGO.

RWY 03 X-RAY: • From KARGO turn RIGHT, track via RNP X RWY 03 (AR).

COMMUNICATIONS FAILURE: PROCEDURE IN IMC

- Squawk 7600, comply with vertical navigation requirements, but not below MSA.
- Track via the latest STAR clearance to the nominated runway, then fly the most suitable approach in accordance with ERSA EMERG Section 1.5.

Changes: Editorial.

PPHSR06-178