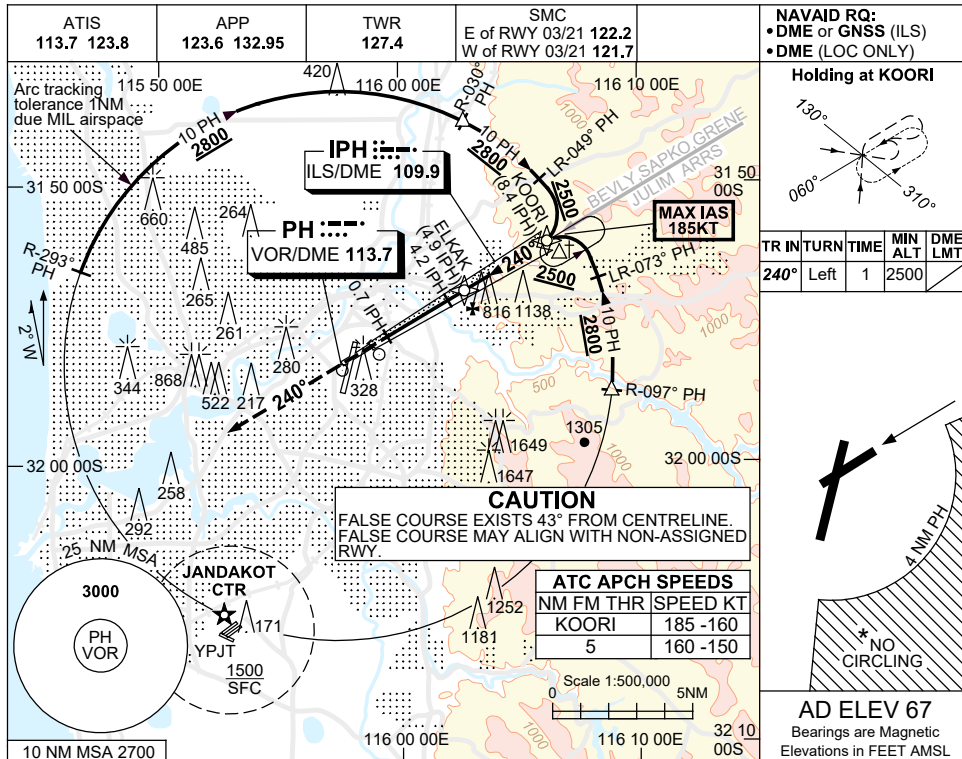


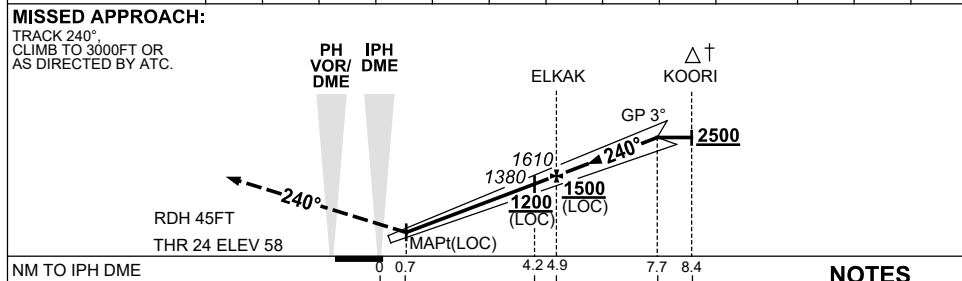
USE QNH

ILS-Z or LOC-Z RWY 24  
PERTH, WA (YPPH)

30 NOV 2023



NM TO IPH DME	1.6	2	3	4.2	4.9	6	7	7.7					
ALT (3° APCH PATH)	550	690	1010	1380	1610	1960	2280	2500					



CATEGORY	A	B	C	D
S-I ILS		260 (202) 0.8		
S-I LOC		550 (492-1.9)		
CIRCLING *	760 (693-2.4)		1440 (1373-4.0)	1440 (1373-5.0)
ALTERNATE*	(1193-4.4)		(1873-6.0)	(1873-7.0)

**NOTES**

1. MAX IAS: KOORI : 185KT.
- \*2. NO CIRCLING CAT C&D ACFT BEYOND 4 DME PH E OF RWY 03/21 AND 06/24.
- †3. ACFT MAY BE RADAR VECTORED TO KOORI.
- \*4. SPECIAL ALTN MNM 700/2.5KM.
5. COLOUR: SEE SPEC NOTICES.

Changes: SAPKO REPLACES CONNI, Editorial.

PPH106-177