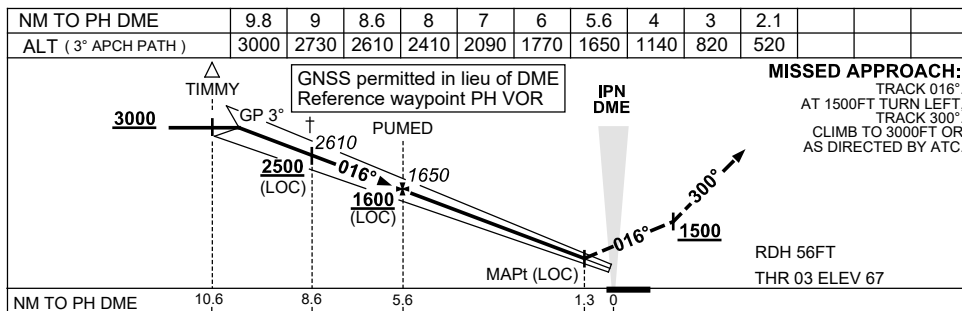
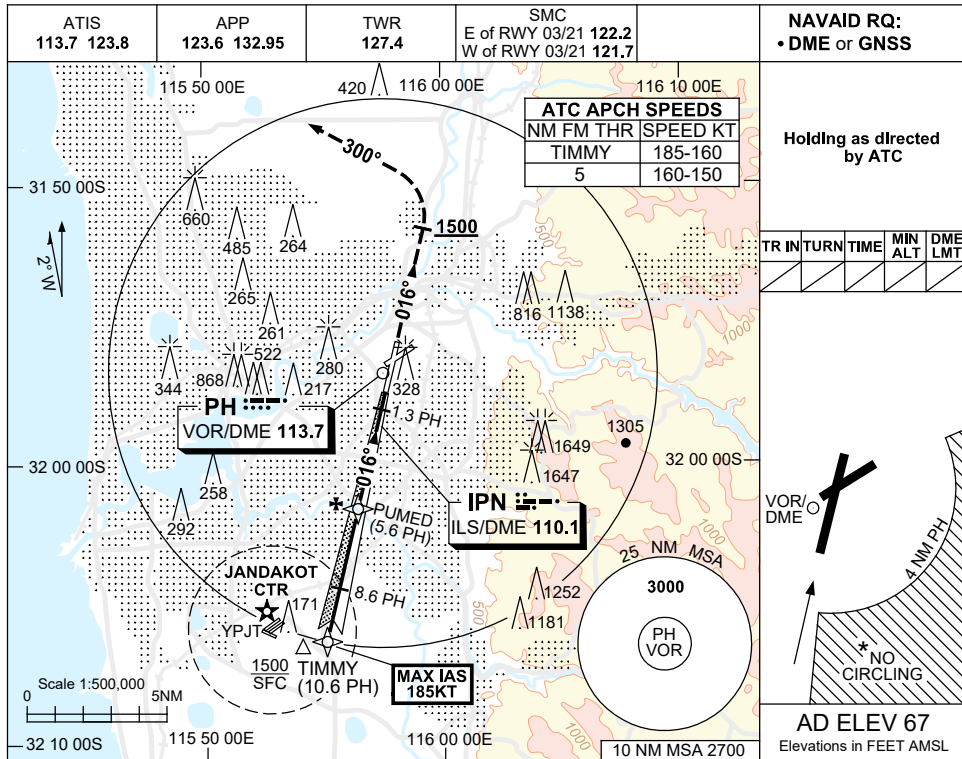


USE QNH

ILS-Y or LOC-Y RWY 03  
PERTH, WA (YPPH)

21 MAY 2020



CATEGORY	A	B	C	D
S-I ILS		270 (203) 0.8	550 RVR	
S-I LOC		520 (453-1.7)		
CIRCLING *	760 (693-2.4)	1440 (1373-4.0)	1440 (1373-5.0)	
ALTERNATE ‡	(1193-4.4)	(1873-6.0)	(1873-7.0)	

**NOTES**

1. MAX IAS:  
TIMMY : 185KT.
- \*2. NO CIRCLING CAT C&D  
ACFT BEYOND 4NM  
PH E OF RWY 03/21  
AND 06/24.
- †3. ACFT MAY BE RADAR  
VECTORED TO FNA.
- \*4. SPECIAL ALTN MNM  
700/2.5KM.
5. COLOUR: SEE  
SPEC NOTICES.

Changes: IPN DME IN PROFILE VIEW.

PPII04-163