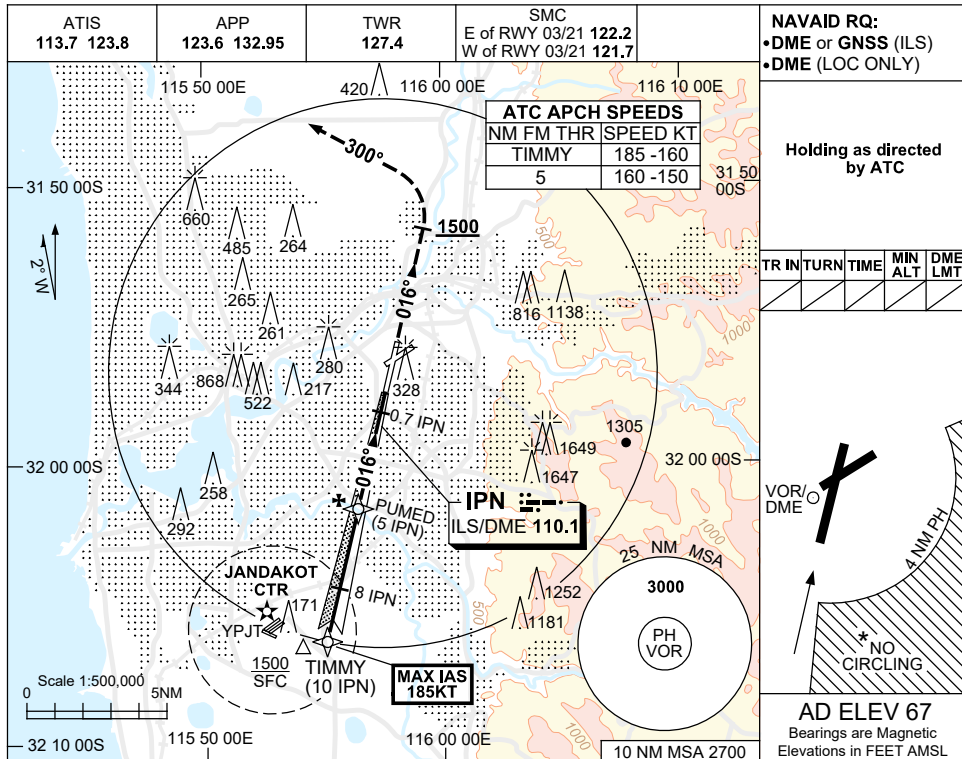


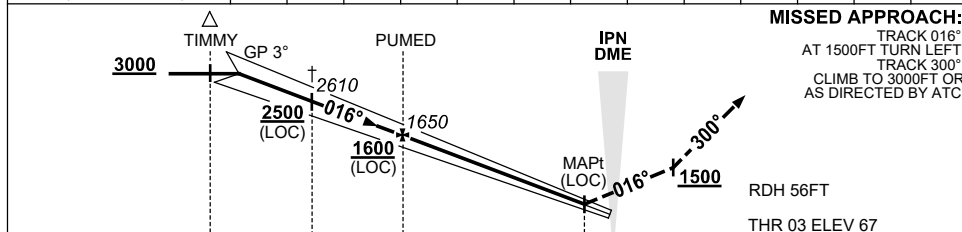
USE QNH

ILS-Z or LOC-Z RWY 03
PERTH, WA (YPPH)

21 MAY 2020



NM TO IPN DME	9.2	9	8	7	6	5	4	3	2	1.4			
ALT (3° APCH PATH)	3000	2930	2610	2290	1970	1650	1340	1020	700	520			



NM TO IPN DME	10	8	5	0.7	0
NM TO THR 03		7.8	4.8	0.5	0

MISSED APPROACH:
 TRACK 016°
 AT 1500FT TURN LEFT,
 TRACK 300°
 CLIMB TO 3000FT OR
 AS DIRECTED BY ATC.

RDH 56FT
 THR 03 ELEV 67

CATEGORY	A	B	C	D
S-I ILS SA CAT I #	RA 148 DA 217 (150) 450 RVR			
S-I ILS	270 (203) 0.8 550 RVR			
S-I LOC	520 (453-1.7)			
CIRCLING *	760 (693-2.4)		1440 (1373-4.0)	1440 (1373-5.0)
ALTERNATE ‡	(1193-4.4)		(1873-6.0)	(1873-7.0)

- NOTES**
- MAX IAS: TIMMY : 185KT.
 - SPECIAL AIRCREW & ACFT CERTIFICATION REQUIRED
 - NO CIRCLING CAT C&D ACFT BEYOND 4NM PH E OF RWY 03/21 AND 06/24.
 - ACFT MAY BE RADAR VECTORED TO FNA.
 - SPECIAL ALTN MNM 700/2.5KM.
 - COLOUR: SEE SPEC NOTICES.

Changes: IPN DME IN PROFILE VIEW.

PPH103-163