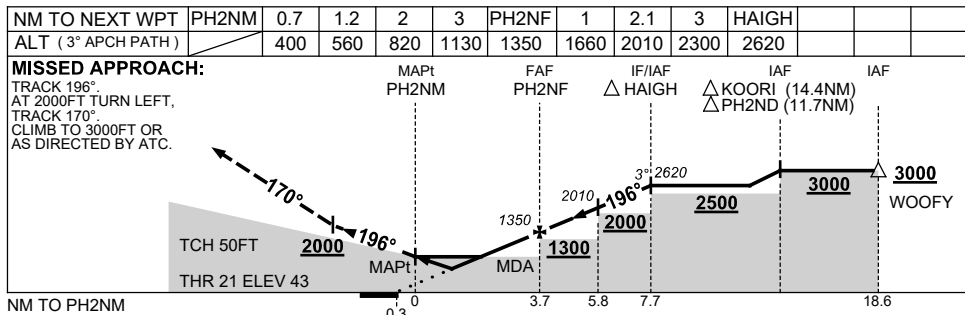
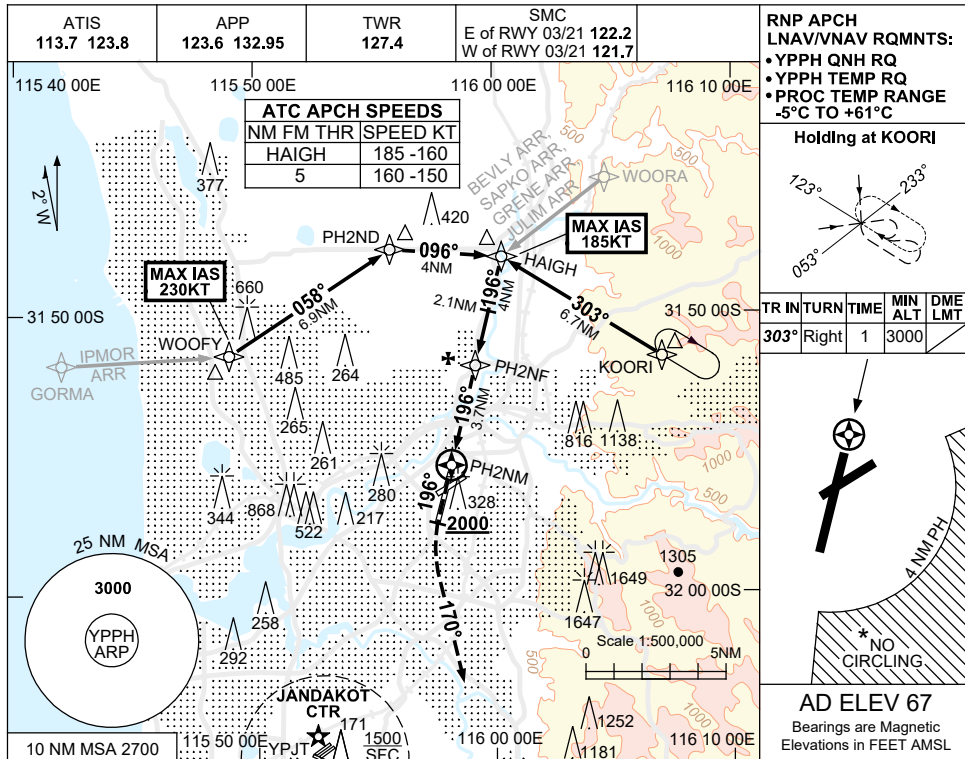


USE QNH

RNP RWY 21
PERTH, WA (YPPH)

30 NOV 2023



NOTES

CATEGORY	A	B	C	D
LNAV/VNAV	400 (357-1.1)			
LNAV	560 (517-2.0)			
CIRCLING*	760 (693-2.4)	1440 (1373-4.0)		1440 (1373-5.0)
ALTERNATE	(1193-4.4)		(1873-6.0)	

1. MAX IAS:
HAIGH 185KT,
WOOFY 230KT.
- * 2. NO CIRCLING CAT C & D
ACFT BEYOND 4NM PH
E OF RWY 03/21 AND 06/24.
3. COLOUR: SEE
SPEC NOTICES.

Changes: WAYPOINT NAMES, Editorial.

PPHGN02-177