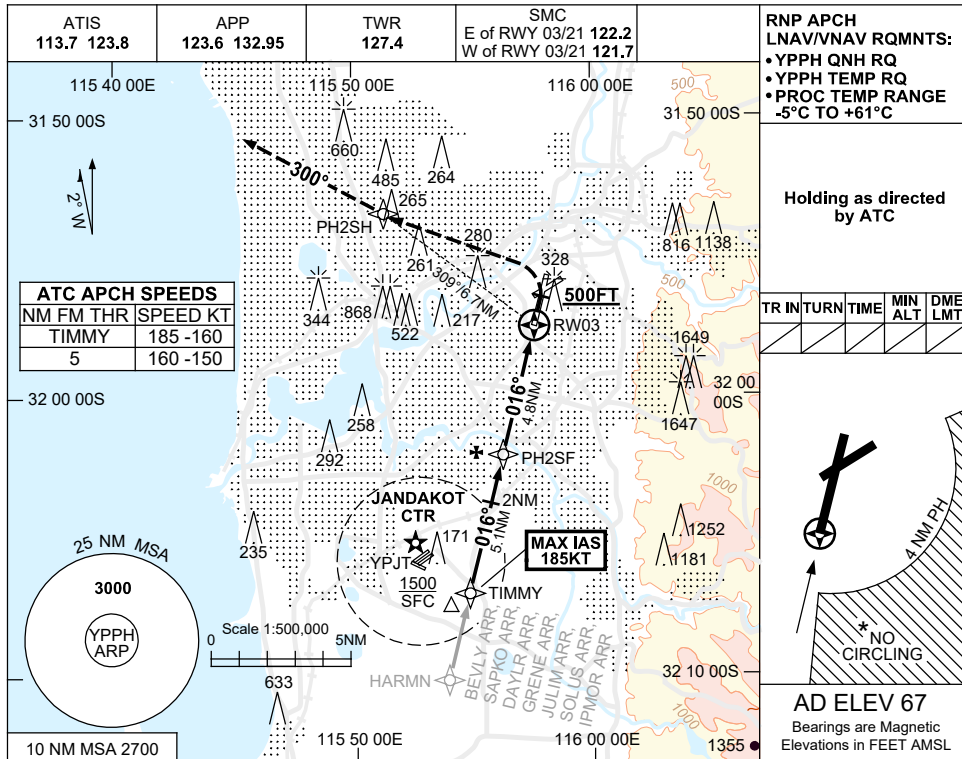


USE QNH

RNP Z RWY 03
PERTH, WA (YPPH)

30 NOV 2023



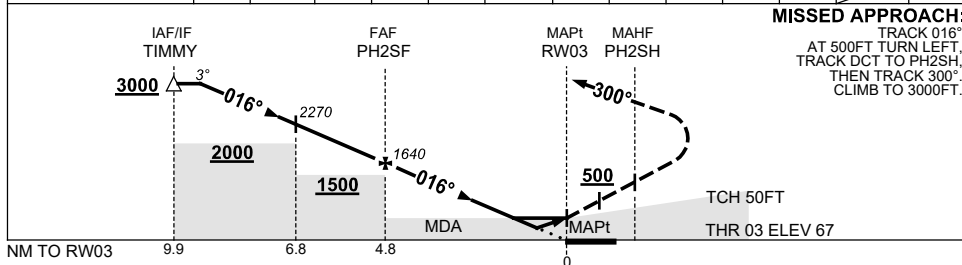
RNP APCH
LNAV/VNAV RQMNTS:
• YPPH QNH RQ
• YPPH TEMP RQ
• PROC TEMP RANGE
-5°C TO +61°C

Holding as directed
by ATC

TR IN	TURN	TIME	MIN ALT	DME LMT

AD ELEV 67
Bearings are Magnetic
Elevations in FEET AMSL

NM TO NEXT WPT	4.3	4	3	2	1	PH2SF	4	3	2	1.4	0.9	RW03
ALT (3° APCH PATH)	3000	2910	2590	2270	1950	1640	1390	1070	750	560	410	



NOTES

- MAX IAS:
TIMMY : 185KT.
MAP TURN : 200KT.
- NO CIRCLING CAT C & D ACFT BEYOND 4NM PH E OF RWY 03/21 AND 06/24.
- COLOUR: SEE SPEC NOTICES.

CATEGORY	A	B	C	D
LNAV/VNAV		410 (343-1.0)		
LNAV		560 (493-1.9)		
CIRCLING *	760 (693-2.4)		1440 (1373-4.0)	1440 (1373-5.0)
ALTERNATE	(1193-4.4)		(1873-6.0)	(1873-7.0)

Changes: IPMOR REPLACES WAVES, SAPKO REPLACES CONNI, Editorial.

PPHGN01-177