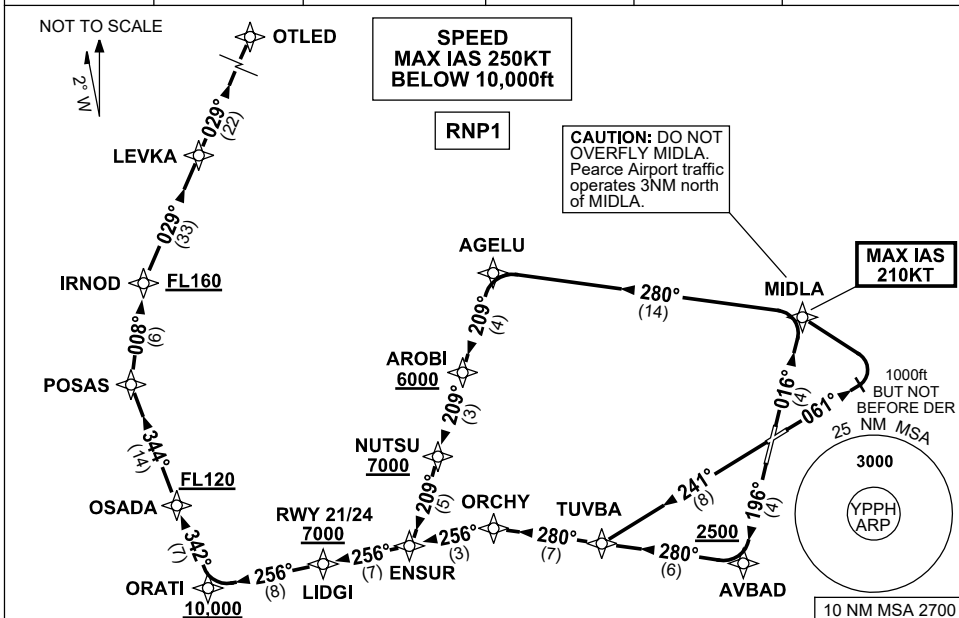


**STANDARD INSTRUMENT DEPARTURES (SID)
OTLED FIVE (NON-JET) (RNAV)
PERTH, WA (YPPH)**

21 MAR 2024

ATIS 113.7 123.8	ACD 118.55	SMC E of RWY 03/21 122.2 W of RWY 03/21 121.7	TWR 127.4	DEP 118.7	Bearings are Magnetic Elevations in FEET AMSL
---------------------	---------------	---	--------------	--------------	--



OTLED FIVE DEPARTURE

RWY 03

GRAD 3.3% (4.3% to FL120)
MAX IAS 210KT UNTIL MIDLA
• Track 016° to MIDLA

RWY 06

GRAD 4% to 2800ft (4.3% to FL120)
MAX IAS 210KT UNTIL MIDLA
• Track 061°
• AT 1000ft but not before DER, turn LEFT
• Track DCT to MIDLA

From MIDLA

- Turn LEFT, track 280° to AGELU
- Turn LEFT, track 209° to AROBI
Cross AROBI AT or ABV 6000ft
(RQ GRAD to AROBI is 5.0%)
- Track 209° to NUTSU
Cross NUTSU AT or ABV 7000ft
(RQ GRAD to NUTSU is 5.0%)
- Track 209° to ENSUR
- Turn RIGHT, track 256° to LIDGI
- Track 256° to ORATI,
Cross ORATI AT or ABV 10,000ft
- Turn RIGHT, track 342° to OSADA
Cross OSADA AT or ABV FL120
- Turn RIGHT, track 344° to POSAS
- Turn RIGHT, track 008° to IRNOD,
Cross IRNOD AT or ABV FL160
- Turn RIGHT, track 029° to LEVKA
- Track 029° to OTLED, then as cleared

RWY 21

GRAD 3.7% to 2800ft (10.6% to 2500ft, then 4.2% to FL120)
• Track 196° to AVBAD
Cross AVBAD AT or ABV 2500ft
• Turn RIGHT, track 280° to TUVBA

RWY 24

GRAD 3.7% to 2800ft (5.3% to FL120)
• Track 241° to TUVBA

From TUVBA

- Track 280° to ORCHY
- Turn LEFT, track 256° to ENSUR
- Track 256° to LIDGI
Cross LIDGI AT or ABV 7,000ft
- Track 256° to ORATI
Cross ORATI AT or ABV 10,000ft
- Turn RIGHT, track 342° to OSADA
Cross OSADA AT or ABV FL120
- Turn RIGHT, track 344° to POSAS
- Turn RIGHT, track 008° to IRNOD,
Cross IRNOD AT or ABV FL160
- Turn RIGHT, track 029° to LEVKA
• Track 029° to OTLED,
then as cleared