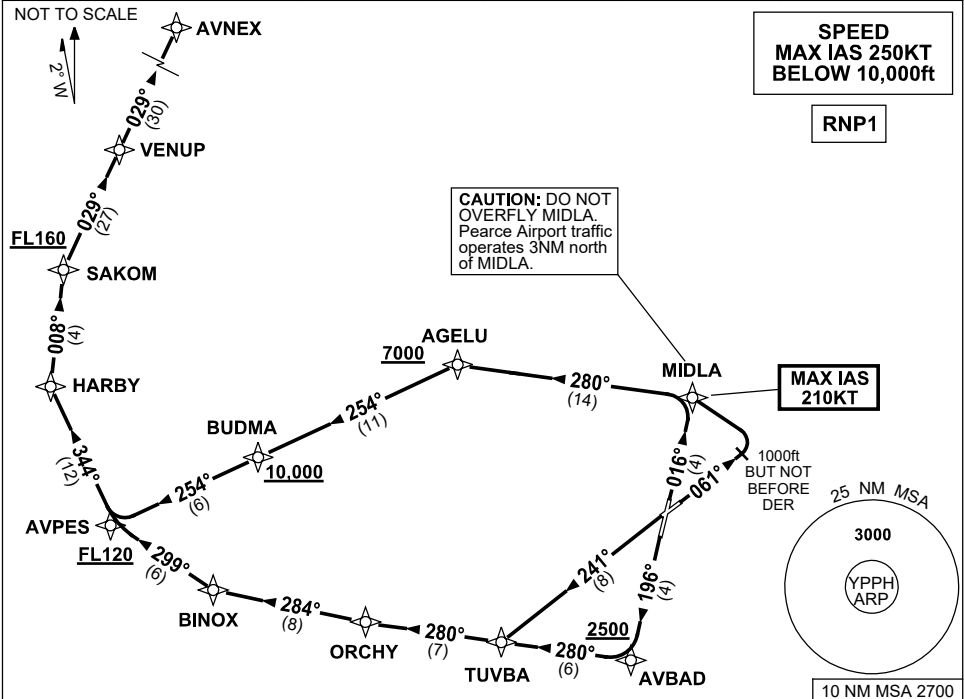


**STANDARD INSTRUMENT DEPARTURES (SID)  
AVNEX FIVE (JET) (RNAV)  
PERTH, WA (YPPH)**

**21 MAR 2024**

ATIS 113.7 123.8	ACD 118.55	SMC E of RWY 03/21 122.2 W of RWY 03/21 121.7	TWR 127.4	DEP 118.7	Bearings are Magnetic Elevations in FEET AMSL
---------------------	---------------	---	--------------	--------------	--



**AVNEX FIVE DEPARTURE (JET) (RNAV)**

**RWY 03**

GRAD 3.3% (6.1% to FL120, then 5.1% to FL160)  
**MAX IAS 210KT UNTIL MIDLA**  
 • Track 016° to MIDLA

**RWY 06**

GRAD 4% to 2800ft (6.1% to FL120, then 5.1% to FL160)  
**MAX IAS 210KT UNTIL MIDLA**  
 • Track 061°  
 • AT 1000ft but not before DER, turn LEFT  
 • Track DCT to MIDLA

**From MIDLA**

- Turn LEFT, track 280° to AGELU  
**Cross AGELU AT or ABV 7000ft**  
 (RQ GRAD to AGELU is 7.0% for RWY 03 only)
- Turn LEFT, track 254° to BUDMA  
**Cross BUDMA AT or ABV 10,000ft**
- Track 254° to AVPES  
**Cross AVPES AT or ABV FL120**
- Turn RIGHT, track 344° to HARBY
- Turn RIGHT, track 008° to SAKOM  
**Cross SAKOM AT or ABV FL160**
- Turn RIGHT, track 029° to VENUP
- Track 029° to AVNEX, then as cleared

**RWY 21**

GRAD 3.7% to 2800ft (10.6% to 2500ft, 5.7% to FL120, then 4.8% to FL160)  
 • Track 196° to AVBAD  
**Cross AVBAD AT or ABV 2500ft**  
 • Turn RIGHT, track 280° to TUVBA

**RWY 24**

GRAD 3.7% to 2800ft (6.6% to FL120, then 4.8% to FL160)  
 • Track 241° to TUVBA

**From TUVBA**

- Track 280° to ORCHY
- Turn RIGHT, track 284° to BINOX
- Turn RIGHT, track 299° to AVPES  
**Cross AVPES AT or ABV FL120**
- Turn RIGHT, track 344° to HARBY
- Turn RIGHT, track 008° to SAKOM  
**Cross SAKOM AT or ABV FL160**
- Turn RIGHT, track 029° to VENUP
- Track 029° to AVNEX, then as cleared

Changes: MSA REF, DEP INSTRUCTIONS, Editorial.

